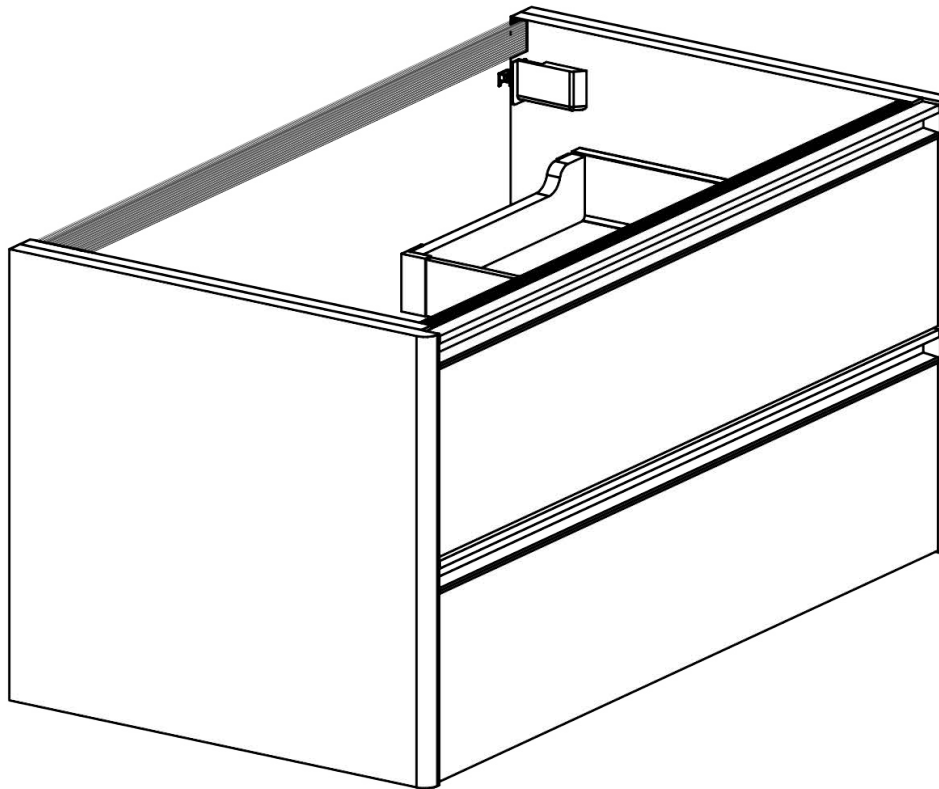


BAGNODESIGN CARLYLE

BDF-CRL-V093

WALL MOUNTED VANITY UNIT WITH DOUBLE DRAWER

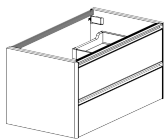
INSTALLATION AND MAINTENANCE GUIDE



SANIPEXGROUP

COMPONENTS

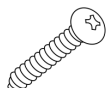
COMPONENTS PROVIDED



x1 VANITY UNIT



x2 WALL BRACKET



x4 SCREW



x4 PLUG

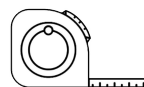


x6 WOOD SCREW

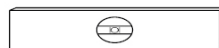
TOOLS REQUIRED



x1 DRILL



x1 MEASURING TAPE



x1 SPIRIT LEVEL



x1 PENCIL



x1 SCREW DRIVER

ATTENTION

IMPORTANT PLEASE READ

All products manufactured and supplied by BAGNODESIGN are fit for purpose as long as they are Installed, used correctly, cleaned and receive regular maintenance in accordance with these instructions.

Remove all packaging and check the product for damage or missing parts before commencing with the installation.

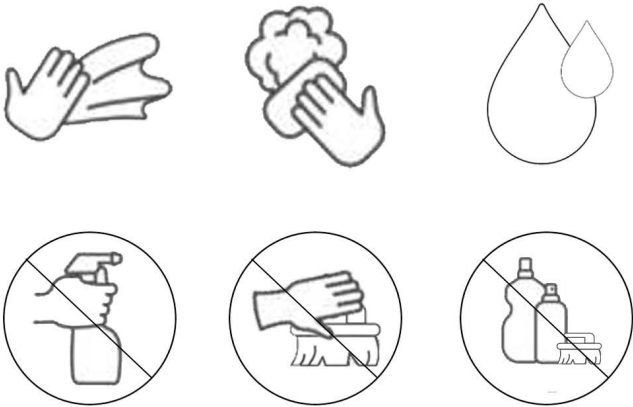
Any alterations made to this product and its components may infringe product certification, infringe water regulations and invalidate the guarantee. The Installation must comply with all local/national water supply authority regulations/bylaws and building and plumbing regulations, therefore we strongly recommend that your product be installed by a reputable qualified trade's person.

DISPOSAL GUIDANCE

The best way to ensure your product has a long life is to follow the Care and Maintenance guides set by the Manufacture after purchase. This document can be found at www.sanipexgroup.com.

The life cycle of the product is *not* in correlation to the product Guarantee; the standards the products are manufactured or certified to (e.g. CE & WRAS) can exceed past the Guarantee duration.

ATTENTION



PRODUCT CLEANING

We recommend cleaning with a soft damp cloth and mild soap solution.

DO NOT use cream cleaners or cleaners containing bleach.

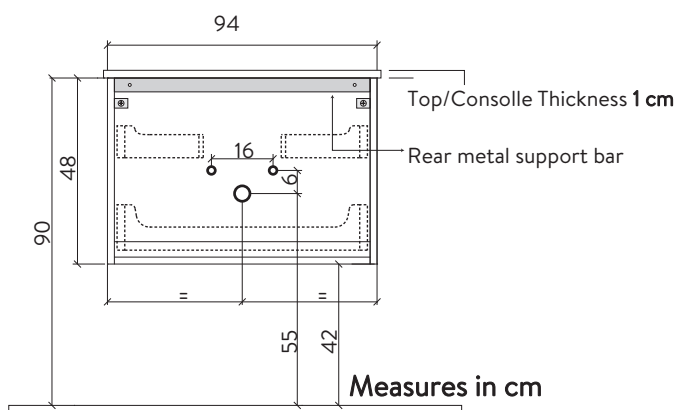
DO NOT scrub or scour.

DO NOT use abrasive cleaning agents.

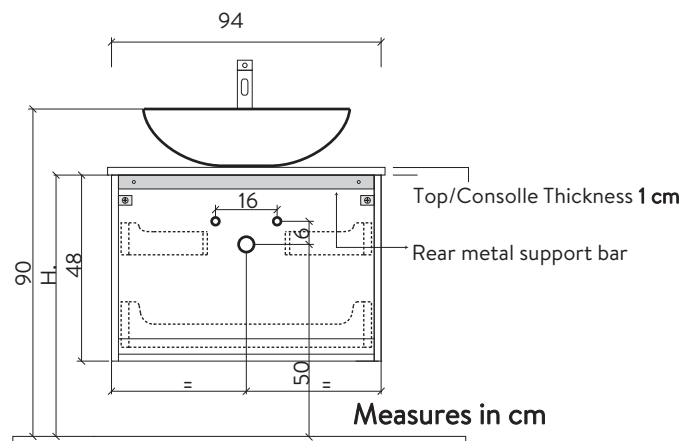
DO NOT use solvent based cleaners.

INSTALLATION OF WALL-HUNG WASHBASIN UNITS H.48 cm

ATTENTION: Measures shown in each drawing shall be considered indicative, thickness of the top, consoles and heights of the washbasins, they may have influence of several centimeters upon the quotation, always consider the needs of the user in addition to any existing plants.



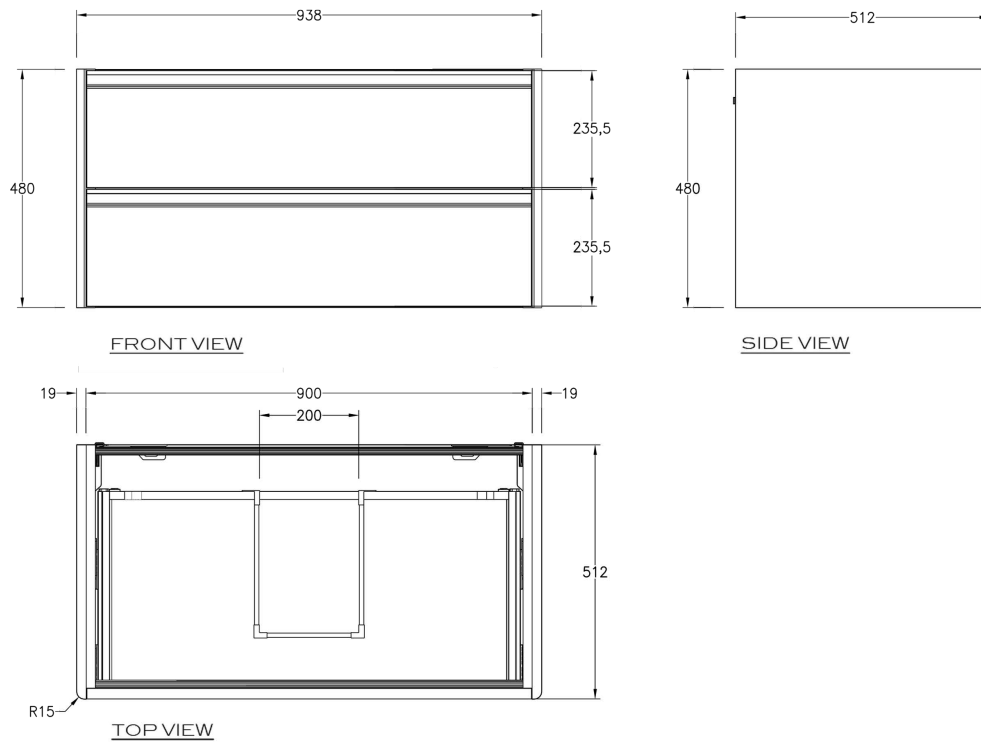
Top with integrated bowls



Top mounted basin

INSTALLATION

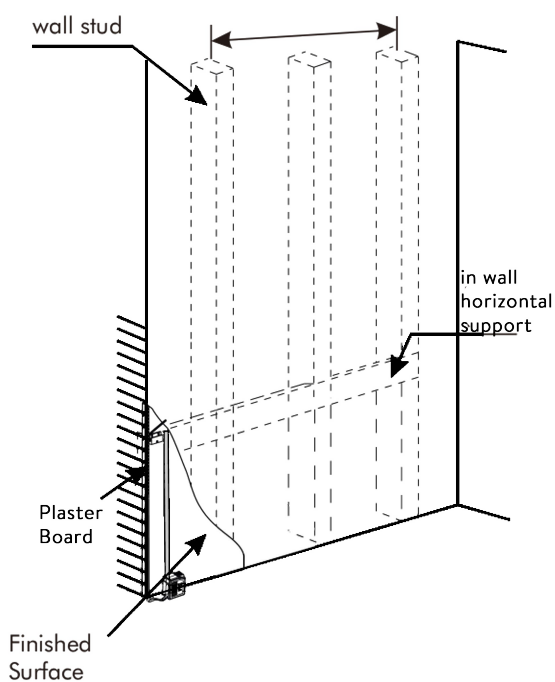
PRODUCT DIMENSION



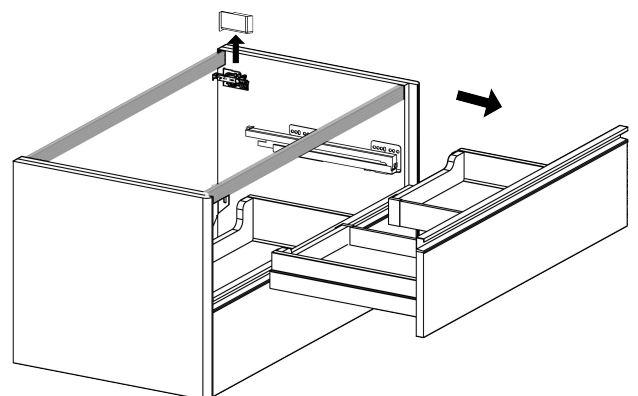
A. WALL BRACKET SYSTEM FOR HOLLOW WALLS

1

Pre-cladding

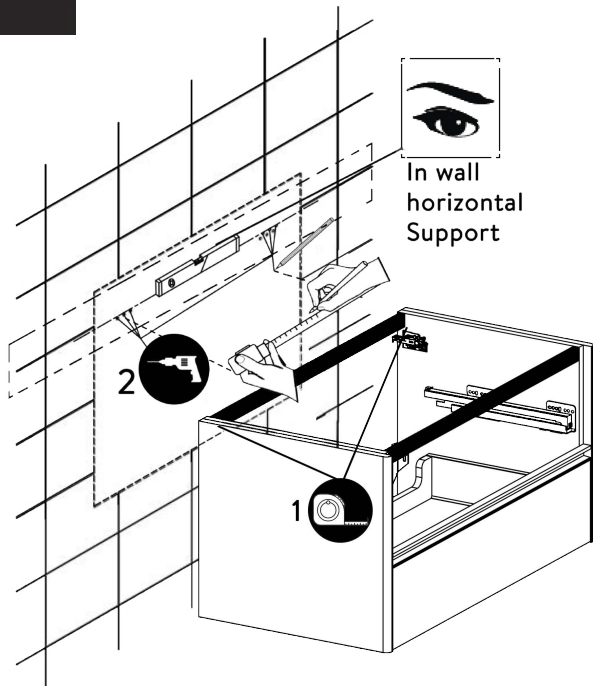


2

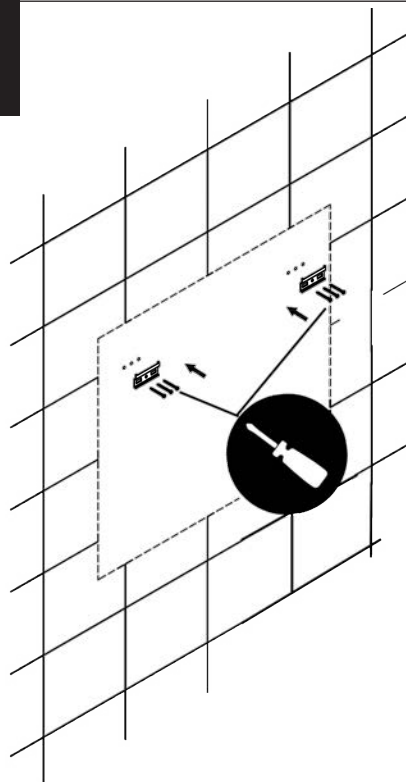


INSTALLATION

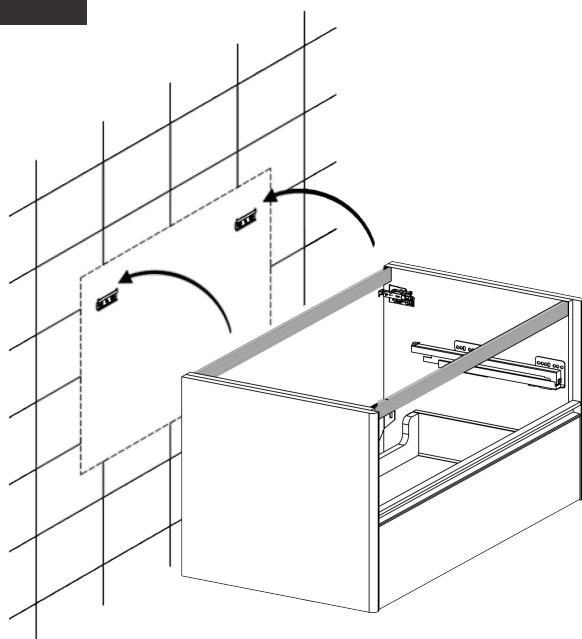
3



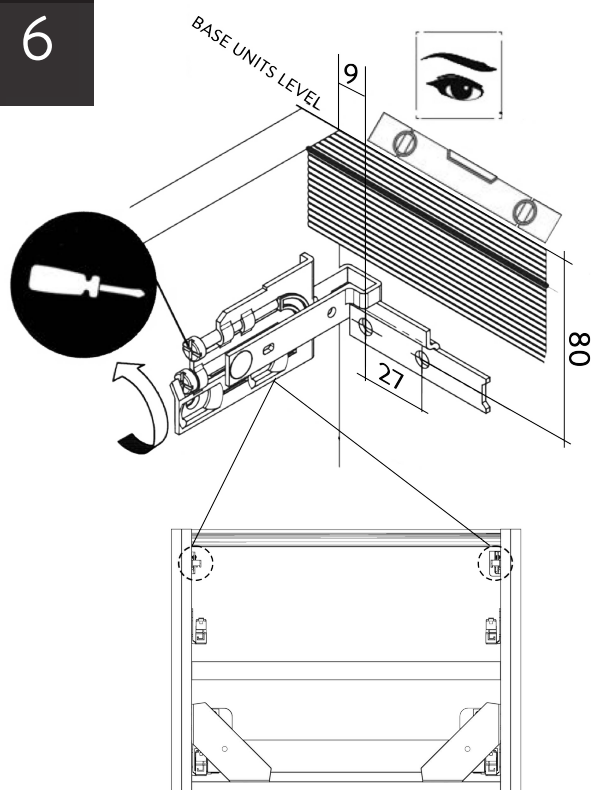
4



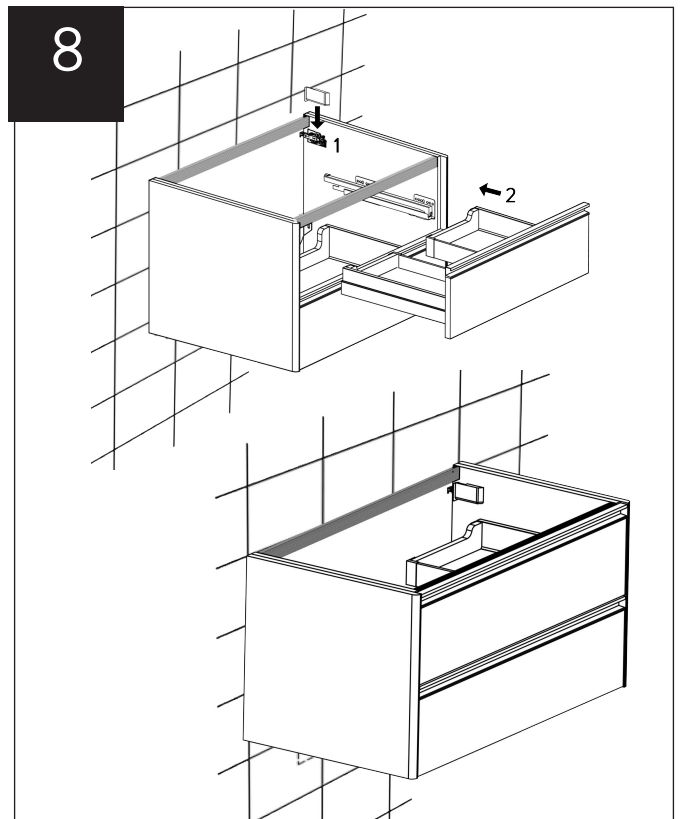
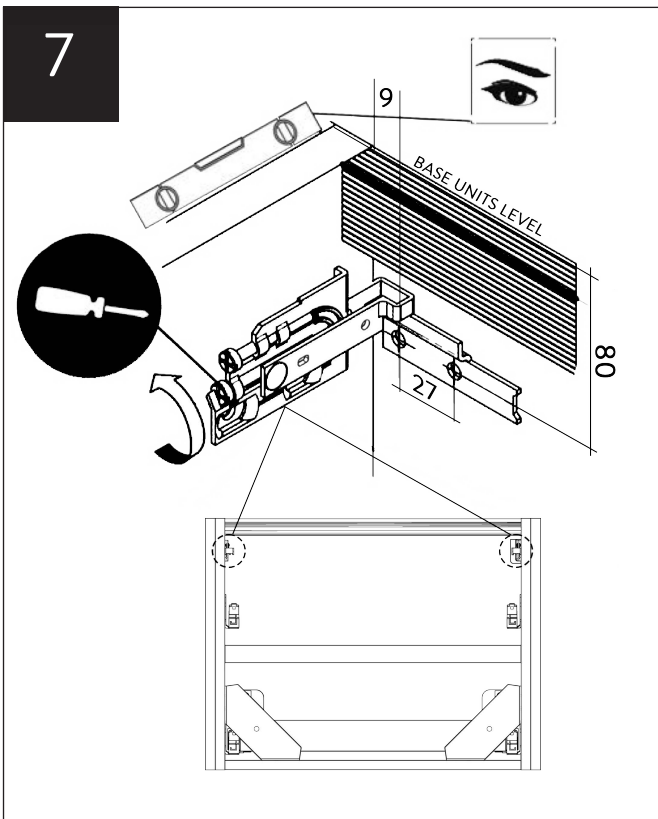
5



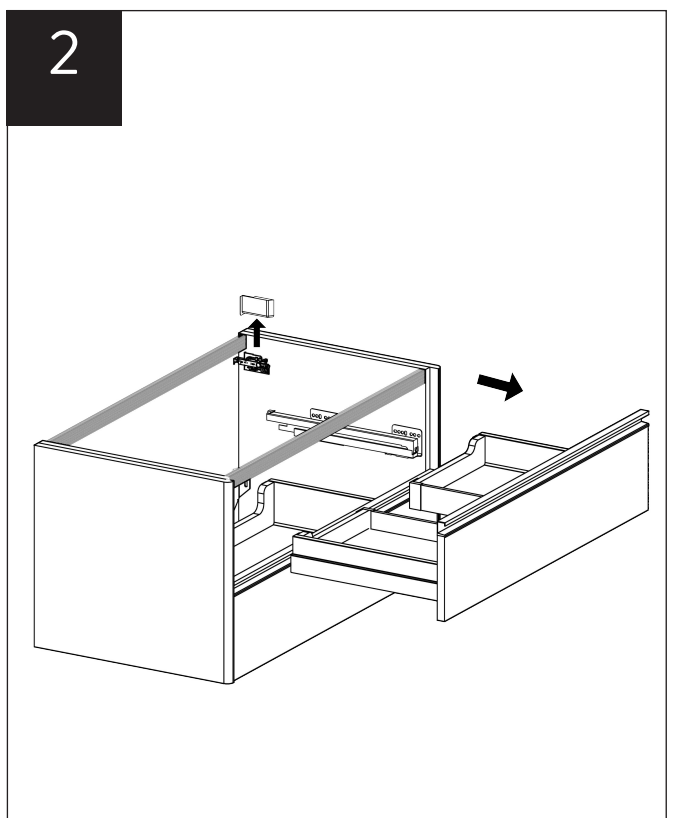
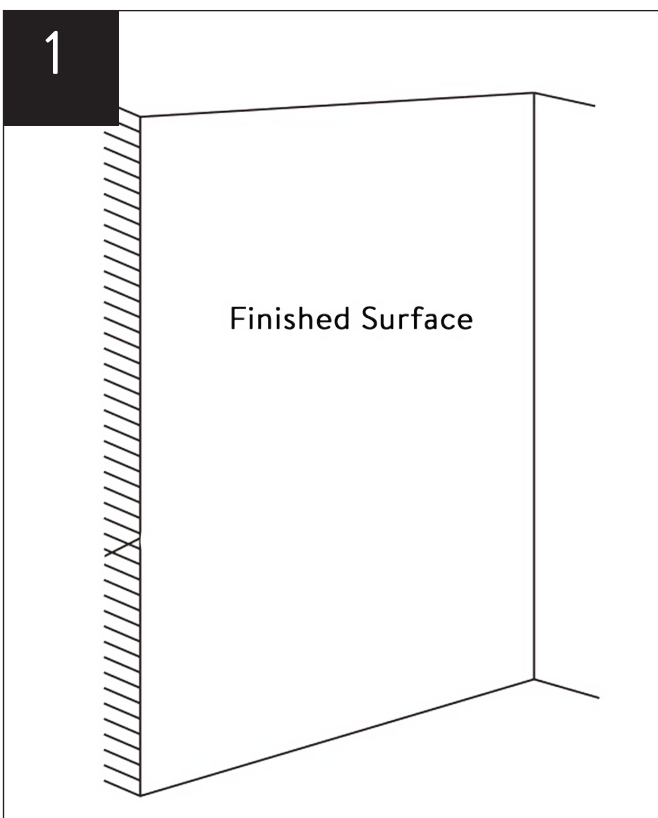
6



INSTALLATION

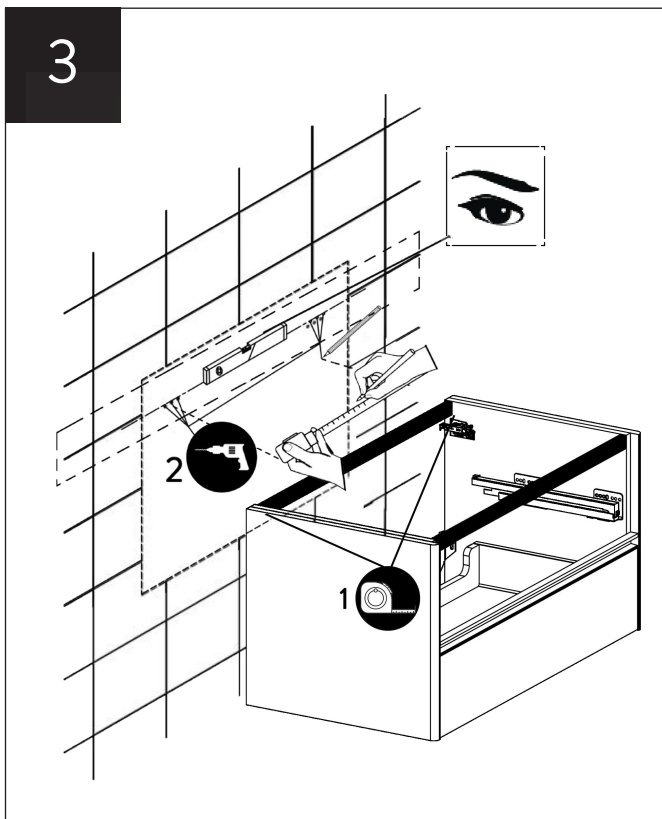


B. WALL BRACKET SYSTEM FOR CONCRETE WALLS

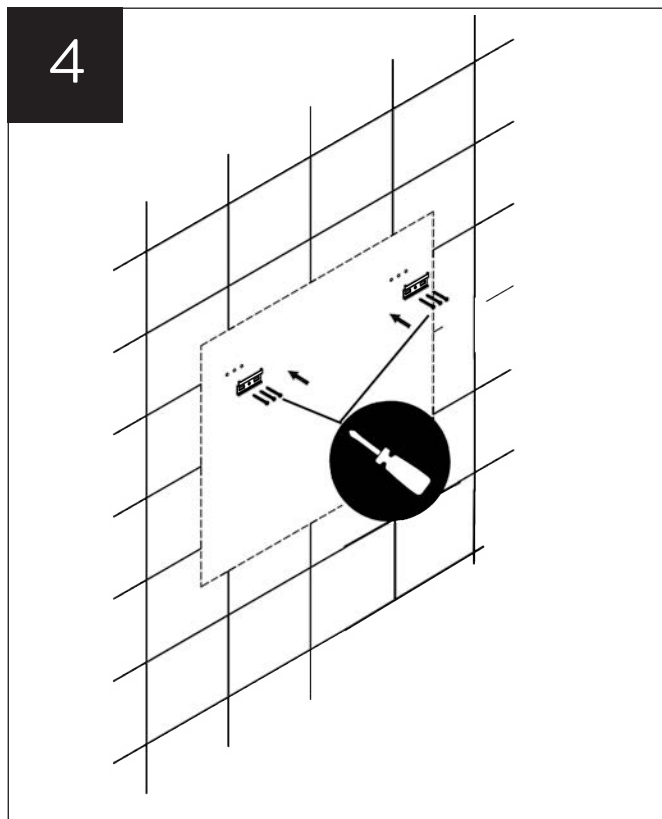


INSTALLATION

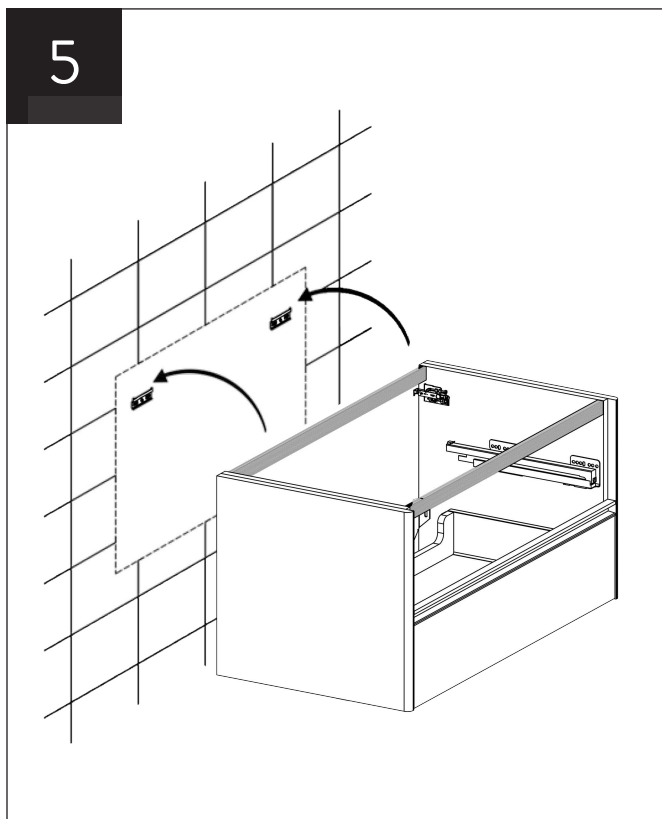
3



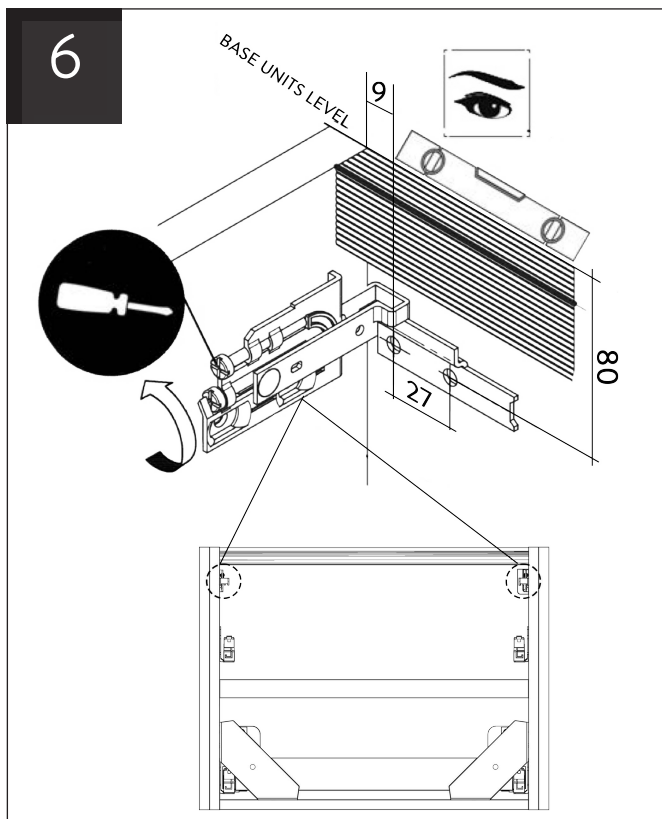
4



5

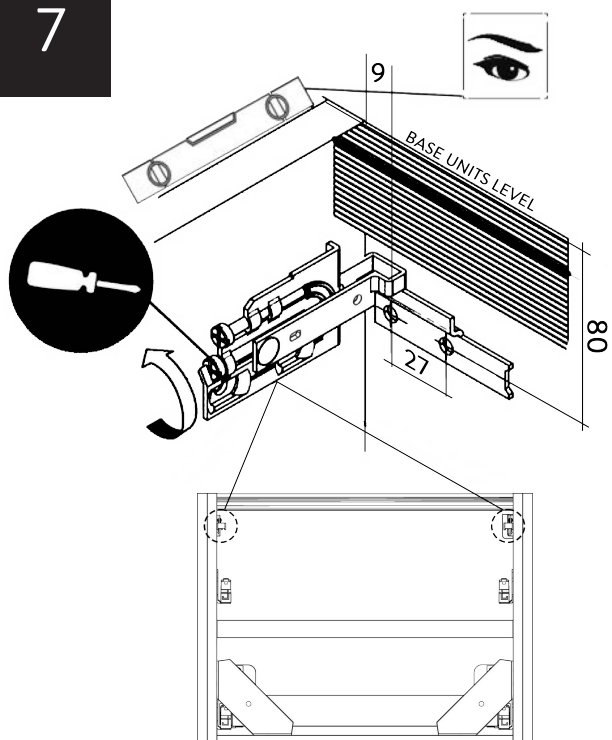


6

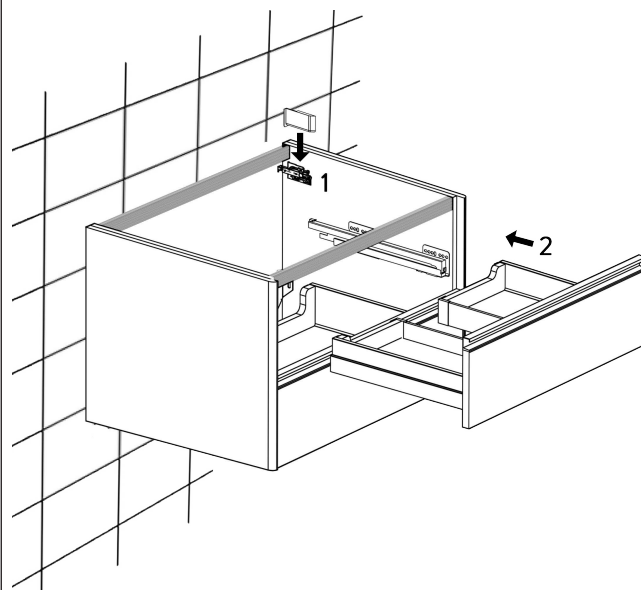


INSTALLATION

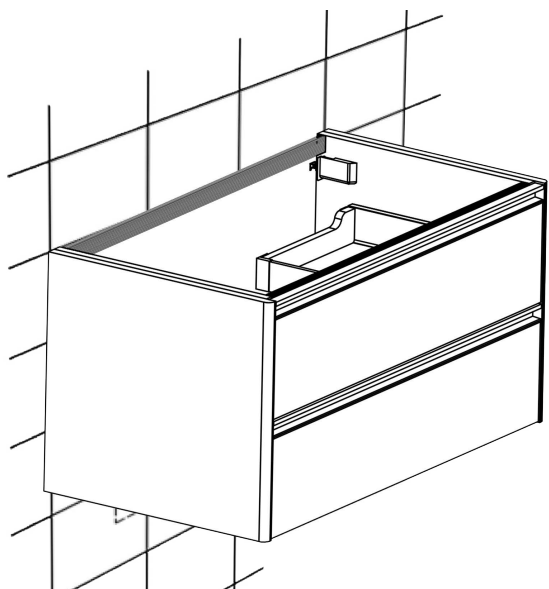
7



8



9



WARRANTY

Sanipex Group warrants that all Products will be free from manufacturing defects and design defaults on the date of purchase and for the duration mentioned in the Product Technical Specification sheet ("Warranty Period").

Liability of Sanipex Group shall be limited to either repairing or replacing the faulty Products, at its sole discretion, if the same are within the Warranty Period. If Sanipex Group has ceased manufacturing the Product and is unable to replace the Product or provide a suitable part, Sanipex Group will offer to replace the Product with a suitable alternative product that matches the Product as closely as possible.

This warranty shall not be applicable on third party products and in such cases the warranty terms of the concerned third party shall apply.

For further details and information about our Warranty conditions and where certain exclusions may apply, please visit **www.sanipexgroup.com/c/warranty**

BAGNODESIGN

For more information visit **www.bagnodesign.it**



SANIPEXGROUP

This installation guide is for reference only. In case there is a discrepancy between that of the instructions and that of the actual product, the latter should be taken as standard. The rights of modification are reserved.