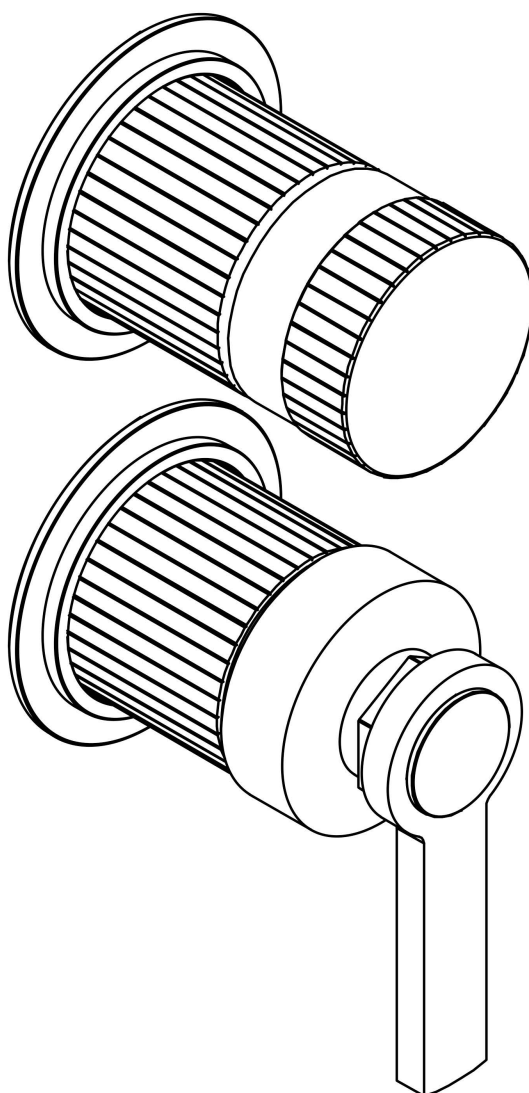


# BAGNODESIGN FONTEYN

BDM-FTY-E412

TRIM PART FOR WALL MOUNTED CONCEALED SHOWER MIXER WITH 3-WAY DIVERTER  
(FOR BDM-MIX-C413-T2)

## INSTALLATION AND MAINTENANCE GUIDE



SANIPEXGROUP

# COMPONENTS

## COMPONENTS PROVIDED



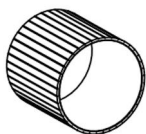
x1 HANDLE



x1 DIVERTER KNOB



x2 SLEEVE CAP

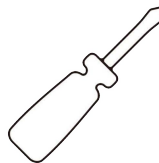


x2 SLEEVE



x2 HANDLE PLATE

## TOOLS REQUIRED



x1 SCREW DRIVER

# ATTENTION

## IMPORTANT PLEASE READ

All products manufactured and supplied by BAGNODESIGN are fit for purpose as long as they are Installed, used .correctly, cleaned and receive regular maintenance in accordance with these instructions

. Remove all packaging and check the product for damage or missing parts before commencing with the installation

Any alterations made to this product and its components may infringe product certification, infringe water regulations and invalidate the guarantee. The Installation must comply with all local/national water supply authority regulations/ bylaws and building and plumbing regulations, therefore we strongly recommend that your product be installed by a reputable qualified trade's person

## DISPOSAL GUIDANCE

The best way to ensure your product has a long life is to follow the Care and Maintenance guides set by the

. Manufacture after purchase. This document can be found at [www.sanipexgroup.com](http://www.sanipexgroup.com)

The life cycle of the product is *not* in correlation to the product Guarantee; the standards the products are .manufactured or certified to (e.g. CE & WRAS) can exceed past the Guarantee duration

## ARMOUR

To ensure your BAGNODESIGN ARMOUR product performs and gives many years of use, please follow these

. recommendations carefully, as any damages resulting from poor maintenance are not covered under the warranty

. The product can be cleaned with warm water, a mild soap, and a clean soft cloth

Clean progressively and gently. It is not required to use any abrasive cleaning pads, wire wool or micro-fibre cloths to . clean the product

If aesthetically unpleasant limescale deposits are found on the surface of the product, do not attempt to chip these off, it can be dissolved using diluted vinegar (maximum concentration 10% at 20 °C) and then rinsed with plenty of clean water

. Avoid a vigorous cleaning action, as this could contribute dulling the finish

Abrasive or strong cleaning products containing ammonia, bleaches, alcohol, solvents, dyes, acids (hydrochloric,

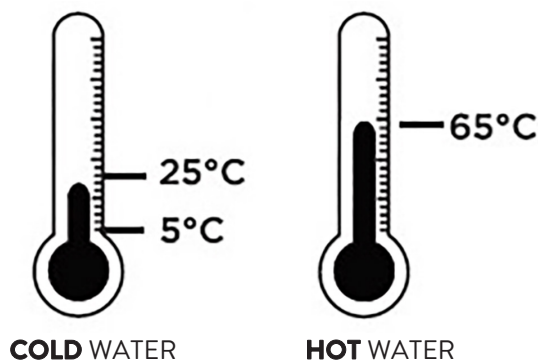
. formic, phosphorus, chlorine or acetic) will be detrimental to the product finish

If using a spray cleaner, apply the cleaning agent onto a soft cloth, never directly spray onto the product as the cleaner may enter gaps and openings and cause damage. Do not allow the cleaner to remain on the product for a

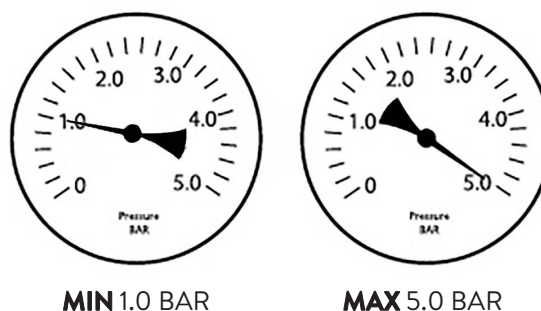
. extended period of time

.After cleaning, rinse thoroughly with clean water. dry with a soft cloth

## INLET WATER TEMPERATURES



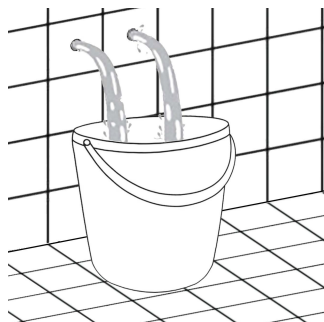
## WATER PRESSURE



Hot and Cold pressure should be kept balanced within 1 BAR

# ATTENTION

## WARNING: FLUSH THE PIPES BEFORE CONNECTING



## PRODUCT CLEANING

We recommend cleaning with a soft damp cloth and mild soap solution.

**DO NOT** use cream cleaners or cleaners containing bleach.

**DO NOT** scrub or scour.

**DO NOT** use abrasive cleaning agents.

**DO NOT** use solvent based cleaners.



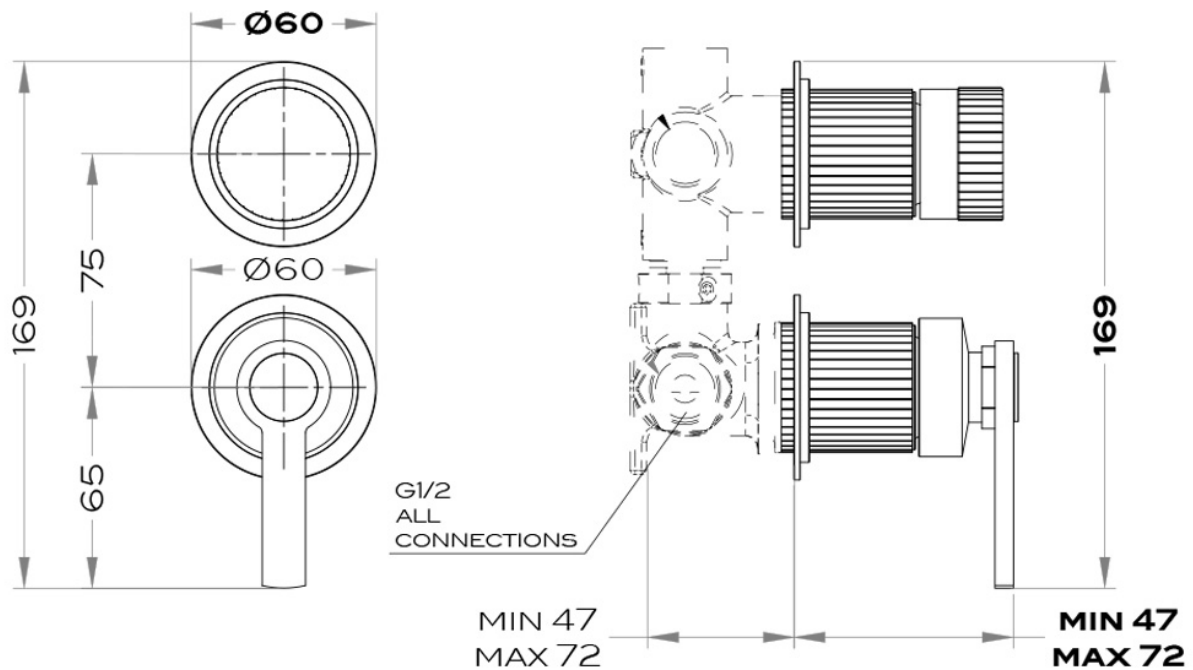
## BEFORE INSTALLATION

- ✓ Check concealed part installation guide :  
BDM-MIX-C413-T2

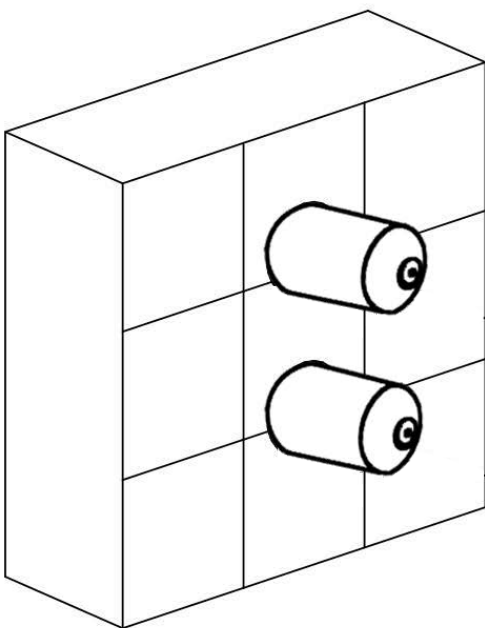


# INSTALLATION

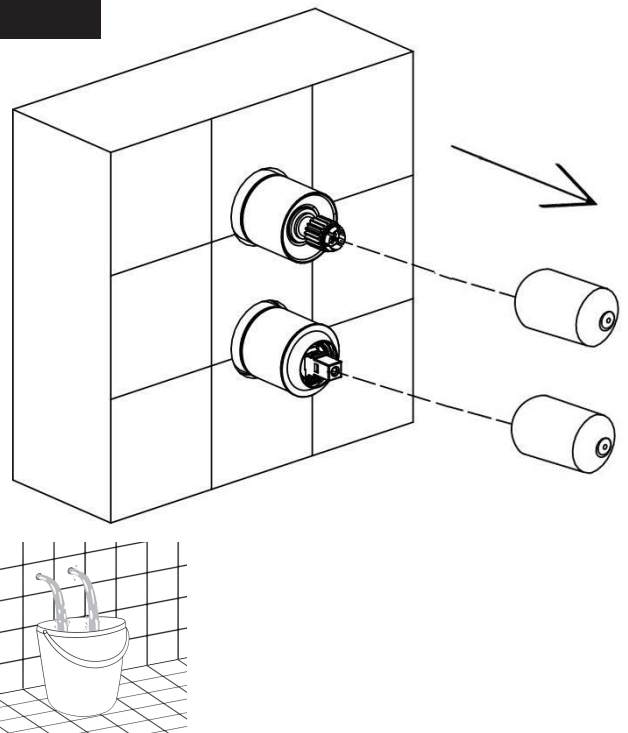
## PRODUCT DIMENSION



1

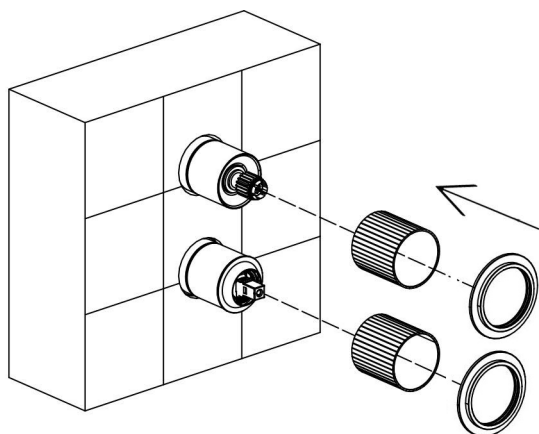


2

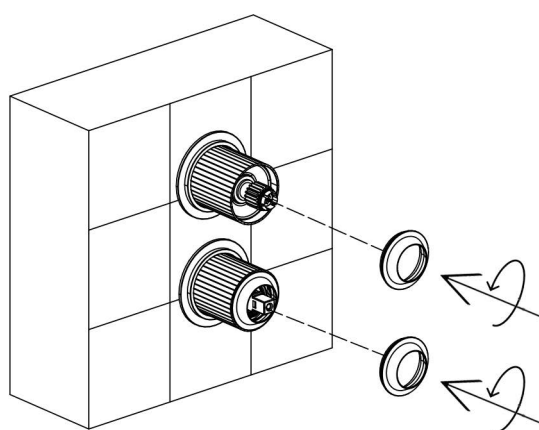


# INSTALLATION

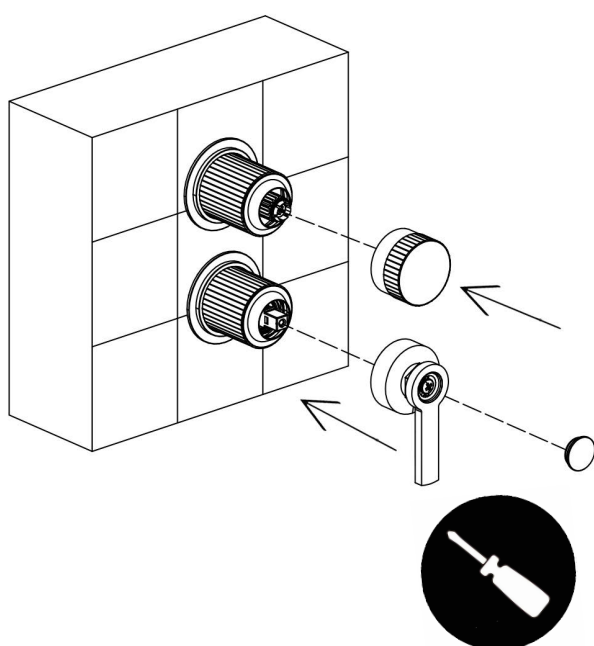
3



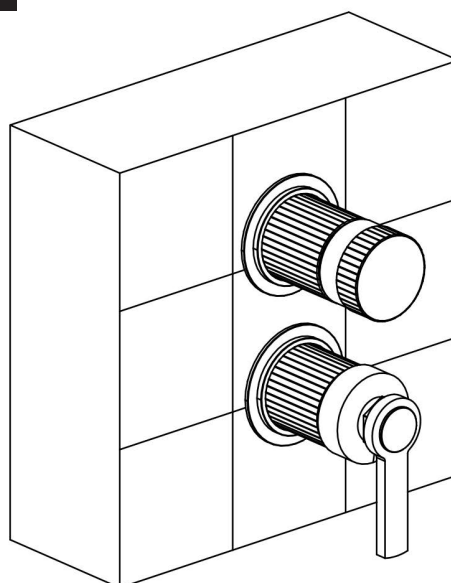
4



5



6



# WARRANTY

Sanipex Group warrants that all Products will be free from manufacturing defects and design defaults on the date of purchase and for the duration mentioned in the Product Technical Specification sheet ("Warranty Period").

Liability of Sanipex Group shall be limited to either repairing or replacing the faulty Products, at its sole discretion, if the same are within the Warranty Period. If Sanipex Group has ceased manufacturing the Product and is unable to replace the Product or provide a suitable part, Sanipex Group will offer to replace the Product with a suitable alternative product that matches the Product as closely as possible.

This warranty shall not be applicable on third party products and in such cases the warranty terms of the concerned third party shall apply.

For further details and information about our Warranty conditions and where certain exclusions may apply, please visit **[www.sanipexgroup.com/c/warranty](http://www.sanipexgroup.com/c/warranty)**

## BAGNODESIGN

For more information visit **[www.bagnodesign.it](http://www.bagnodesign.it)**



**SANIPEXGROUP**

