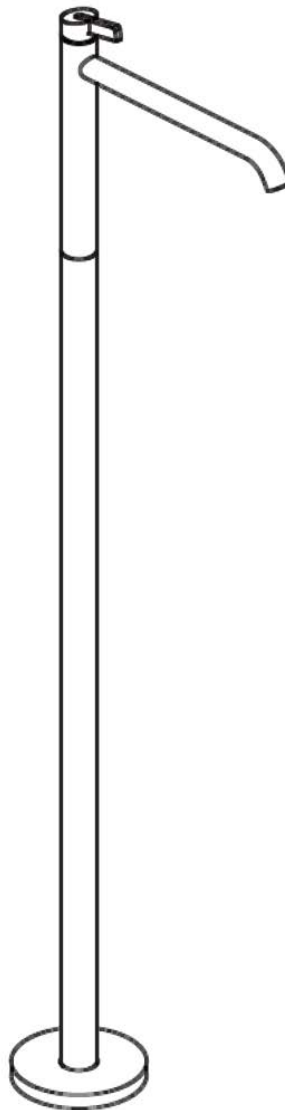


BAGNODESIGN BEACH HOUSE

BDM-BCH-E306

EXPOSED PART FOR THE FLOOR MOUNTED BASIN MIXER
(FOR BDM-MIX-C306-T4)

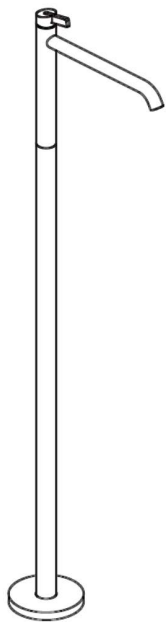
INSTALLATION AND MAINTENANCE GUIDE



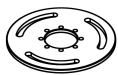
SANIPEXGROUP

COMPONENTS

COMPONENTS PROVIDED



x1 TRIM PART



x1 STEEL PLATE



x2 BARSS HOSE CONNECTOR

TOOLS REQUIRED



x1 ALLEN KEY



x1 ADJUSTABLE SPANNER

ATTENTION

IMPORTANT PLEASE READ

All products manufactured and supplied by BAGNODESIGN are fit for purpose as long as they are Installed, used .correctly, cleaned and receive regular maintenance in accordance with these instructions

. Remove all packaging and check the product for damage or missing parts before commencing with the installation

Any alterations made to this product and its components may infringe product certification, infringe water regulations and invalidate the guarantee. The Installation must comply with all local/national water supply authority regulations/ bylaws and building and plumbing regulations, therefore we strongly recommend that your product be installed by a reputable qualified trade's person

DISPOSAL GUIDANCE

The best way to ensure your product has a long life is to follow the Care and Maintenance guides set by the

. Manufacture after purchase. This document can be found at www.sanipexgroup.com

The life cycle of the product is *not* in correlation to the product Guarantee; the standards the products are .manufactured or certified to (e.g. CE & WRAS) can exceed past the Guarantee duration

ARMOUR

To ensure your BAGNODESIGN ARMOUR product performs and gives many years of use, please follow these

. recommendations carefully, as any damages resulting from poor maintenance are not covered under the warranty

. The product can be cleaned with warm water, a mild soap, and a clean soft cloth

Clean progressively and gently. It is not required to use any abrasive cleaning pads, wire wool or micro-fibre cloths to . clean the product

If aesthetically unpleasant limescale deposits are found on the surface of the product, do not attempt to chip these off, it can be dissolved using diluted vinegar (maximum concentration 10% at 20 °C) and then rinsed with plenty of clean water

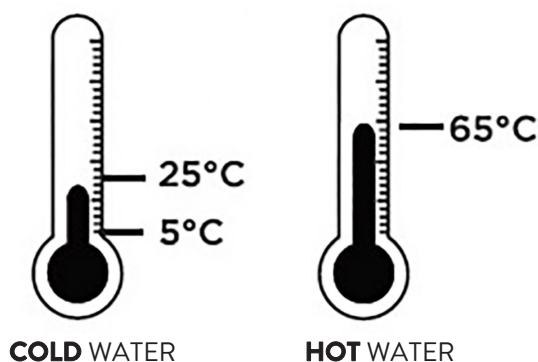
. Avoid a vigorous cleaning action, as this could contribute dulling the finish

Abrasive or strong cleaning products containing ammonia, bleaches, alcohol, solvents, dyes, acids (hydrochloric, . formic, phosphorus, chlorine or acetic) will be detrimental to the product finish

If using a spray cleaner, apply the cleaning agent onto a soft cloth, never directly spray onto the product as the cleaner may enter gaps and openings and cause damage. Do not allow the cleaner to remain on the product for a . extended period of time

.After cleaning, rinse thoroughly with clean water. dry with a soft cloth

INLET WATER TEMPERATURES



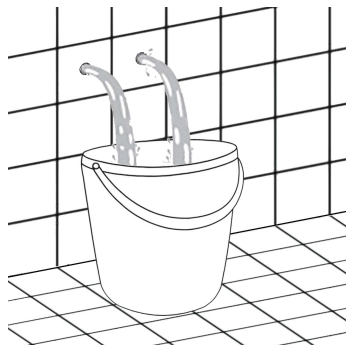
WATER PRESSURE



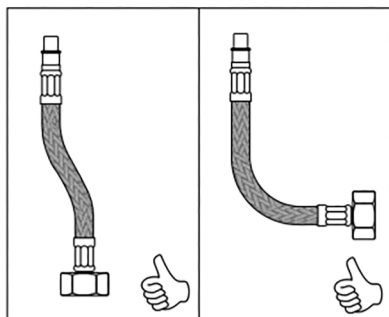
Hot and Cold pressure should be kept balanced within 1 BAR

ATTENTION

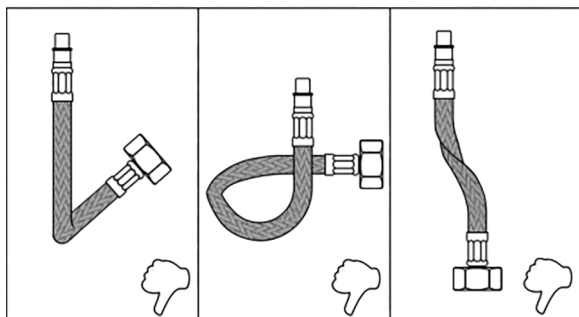
WARNING: FLUSH THE PIPES BEFORE CONNECTING



CORRECT PIPE CONNECTIONS



INCORRECT PIPE CONNECTIONS



PRODUCT CLEANING

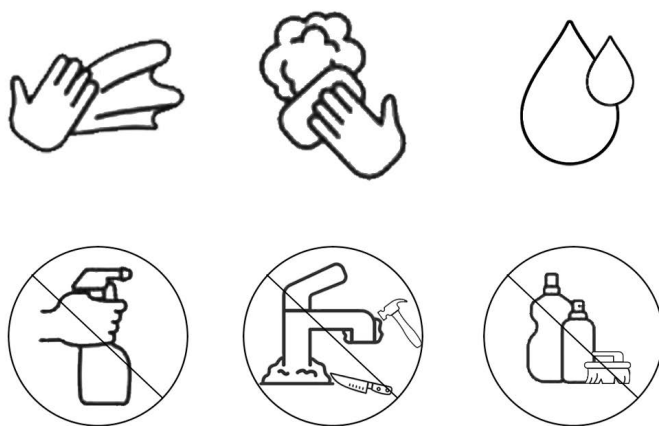
We recommend cleaning with a soft damp cloth and mild soap solution.

DO NOT use cream cleaners or cleaners containing bleach.

DO NOT scrub or scour.

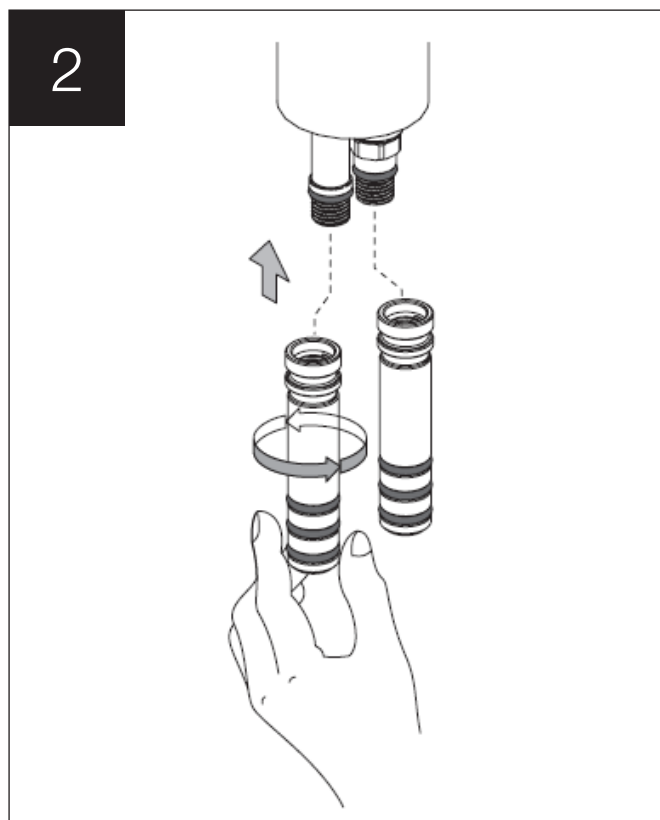
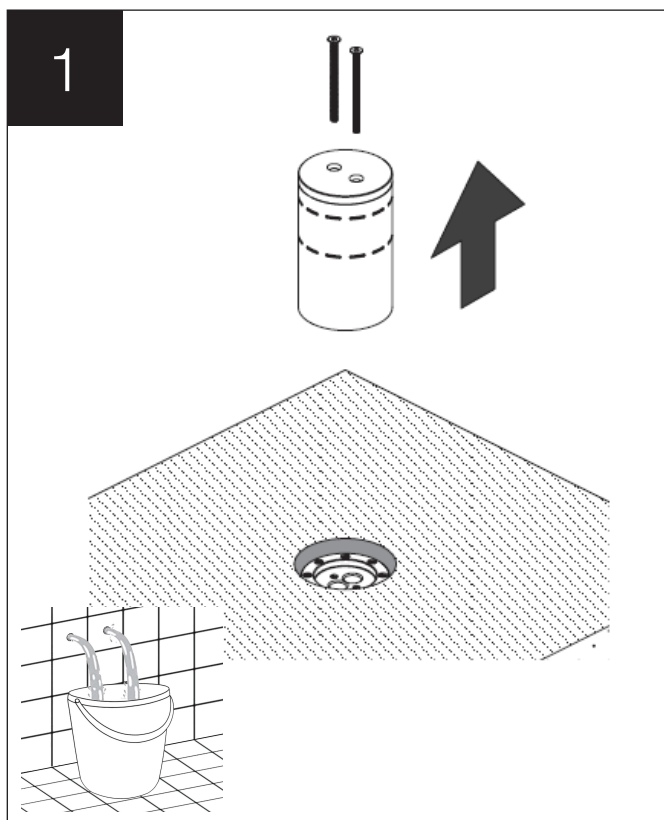
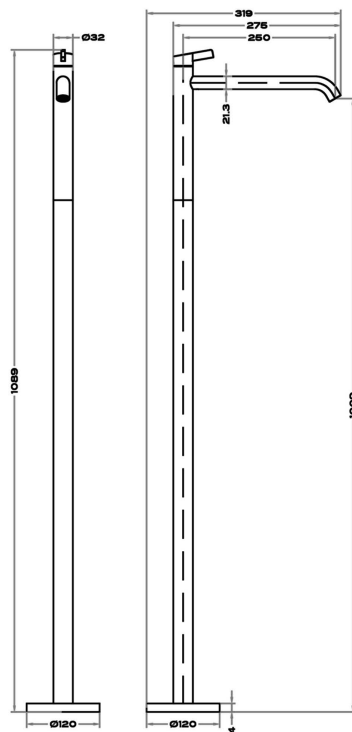
DO NOT use abrasive cleaning agents.

DO NOT use solvent based cleaners.

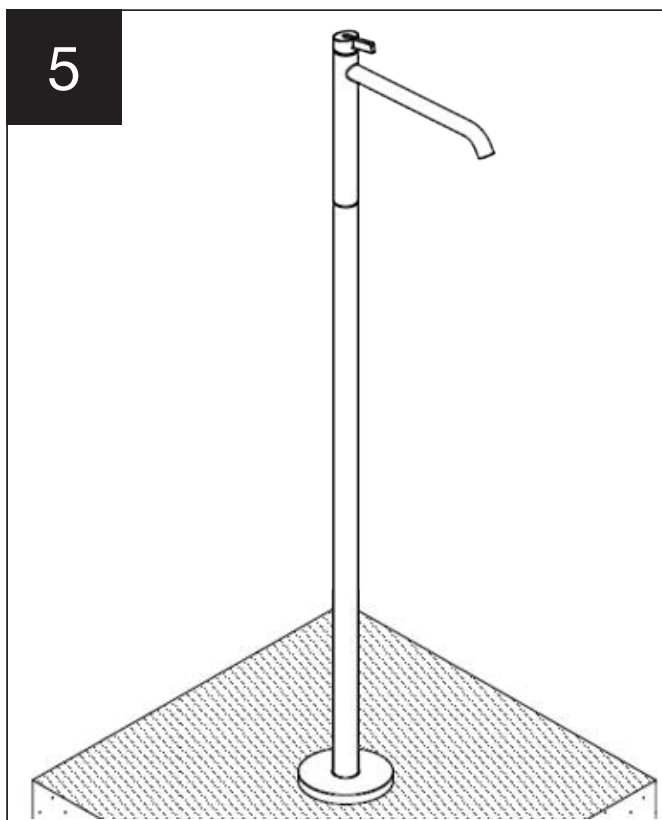
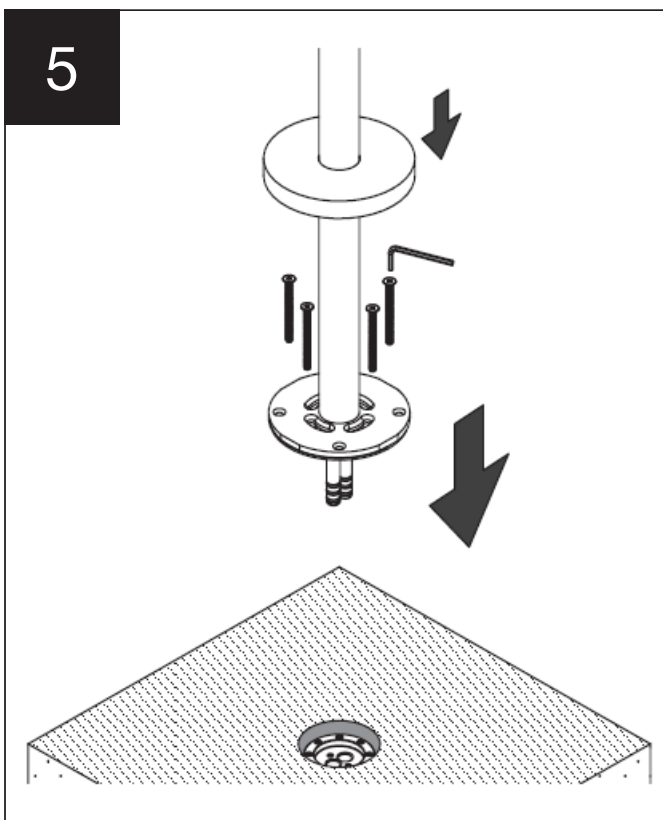
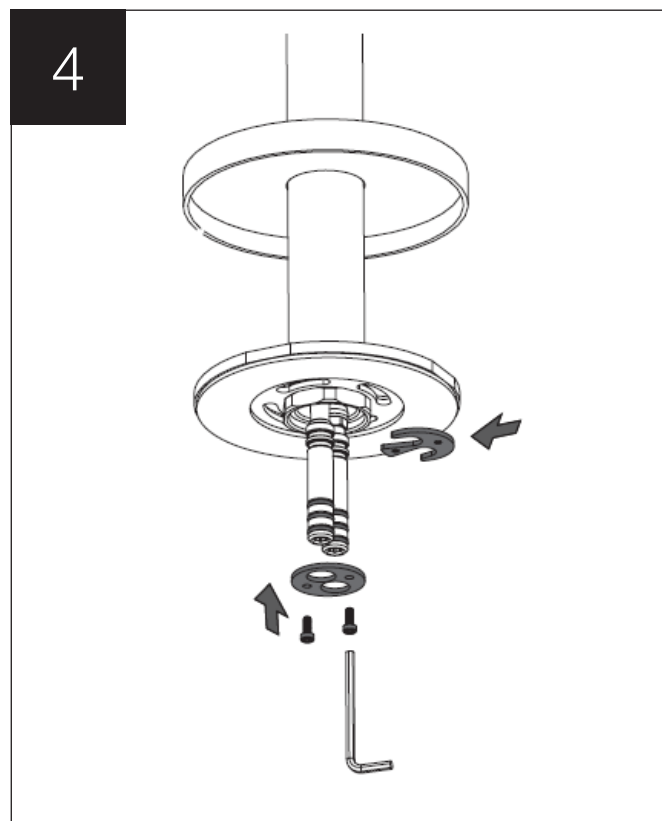
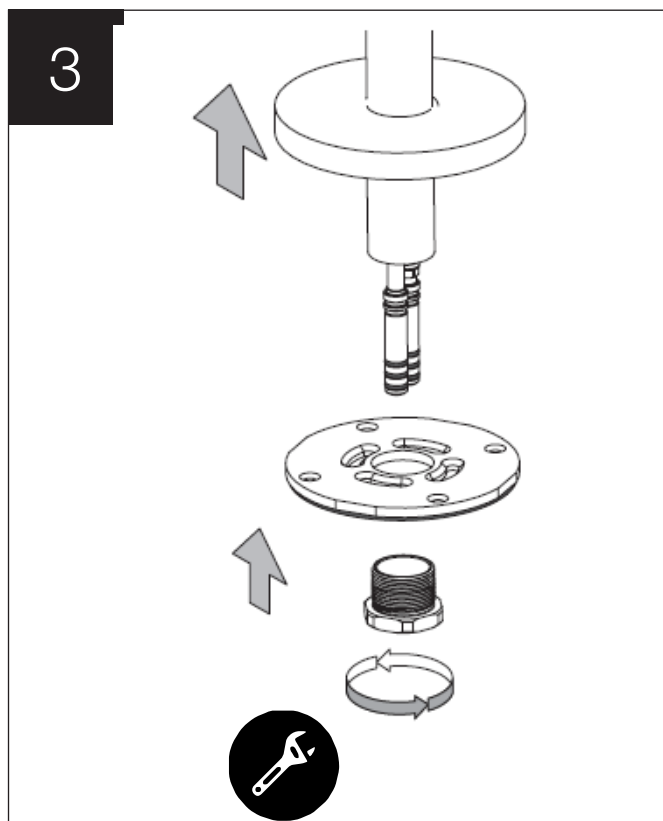


INSTALLATION

PRODUCT DIMENSION



INSTALLATION



WARRANTY

Sanipex Group warrants that all Products will be free from manufacturing defects and design defaults on the date of purchase and for the duration mentioned in the Product Technical Specification sheet ("Warranty Period").

Liability of Sanipex Group shall be limited to either repairing or replacing the faulty Products, at its sole discretion, if the same are within the Warranty Period. If Sanipex Group has ceased manufacturing the Product and is unable to replace the Product or provide a suitable part, Sanipex Group will offer to replace the Product with a suitable alternative product that matches the Product as closely as possible.

This warranty shall not be applicable on third party products and in such cases the warranty terms of the concerned third party shall apply.

For further details and information about our Warranty conditions and where certain exclusions may apply, please visit **www.sanipexgroup.com/c/warranty**

BAGNODESIGN

For more information visit **www.bagnodesign.it**



SANIPEXGROUP

This installation guide is for reference only. In case there is a discrepancy between that of the instructions and that of the actual product, the latter should be taken as standard. The rights of modification are reserved.

