

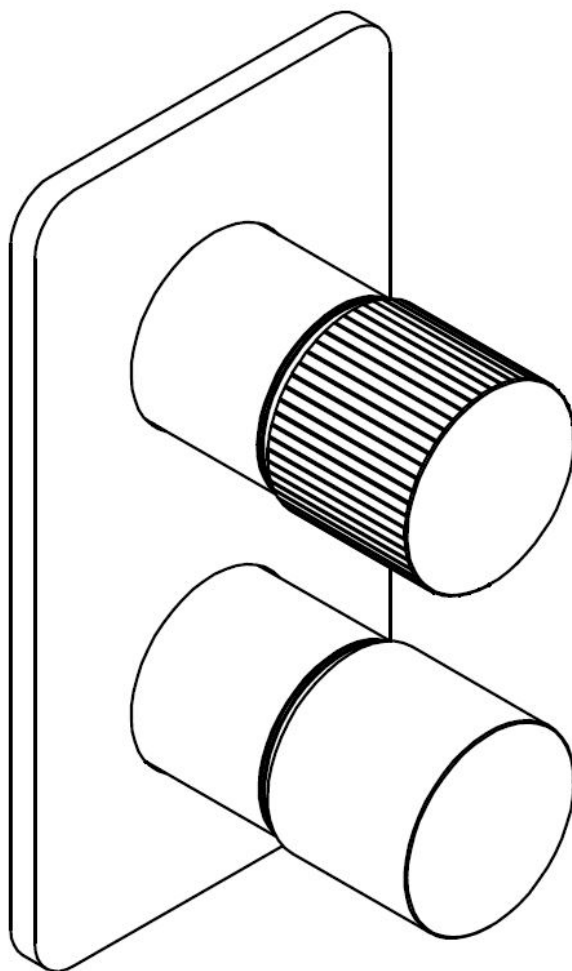
# BAGNODESIGN TOKO FLAVOURS

BDM-TOK-E411

TRIM PART FOR WALL MOUNTED CONCEALED SHOWER MIXER WITH 2 WAY DIVERTER  
(FOR BDM-MIX-C412-T2)

---

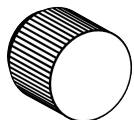
## INSTALLATION AND MAINTENANCE GUIDE



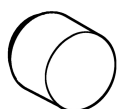
SANIPEXGROUP

# COMPONENTS

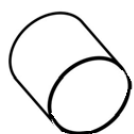
## COMPONENTS PROVIDED



x1 DIVERTER HANDLE



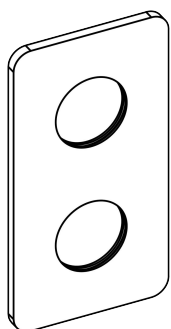
x1 MIXER HANDLE



x2 SLEEVE



x 2 SLEEVE CAP



x1 PLATE

## TOOLS REQUIRED



X1 ALLEN KEY

# ATTENTION

## IMPORTANT PLEASE READ

All products manufactured and supplied by BAGNODESIGN are fit for purpose as long as they are Installed, used correctly, cleaned and receive regular maintenance in accordance with these instructions.

Remove all packaging and check the product for damage or missing parts before commencing with the installation.

Any alterations made to this product and its components may infringe product certification, infringe water regulations and invalidate the guarantee. The Installation must comply with all local/national water supply authority regulations/ by laws and building and plumbing regulations, therefore we strongly recommend that your product be installed by a reputable qualified trade's person.

## DISPOSAL GUIDANCE

The best way to ensure your product has a long life is to follow the Care and Maintenance guides set by the Manufacture after purchase. This document can be found at [www.sanipexgroup.com](http://www.sanipexgroup.com).

The life cycle of the product is *not* in correlation to the product Guarantee; the standards the products are manufactured or certified to (e.g. CE & WRAS) can exceed past the Guarantee duration.

## ARMOUR

To ensure your BAGNODESIGN ARMOUR product performs and gives many years of use, please follow these recommendations carefully, as any damages resulting from poor maintenance are not covered under the warranty.

The product can be cleaned with warm water, a mild soap, and a clean soft cloth.

Clean progressively and gently. It is not required to use any abrasive cleaning pads, wire wool or micro-fibre cloths to clean the product.

If aesthetically unpleasant limescale deposits are found on the surface of the product, do not attempt to chip these off, it can be dissolved using diluted vinegar (maximum concentration 10% at 20 °C) and then rinsed with plenty of clean water.

Avoid a vigorous cleaning action, as this could contribute dulling the finish.

Abrasive or strong cleaning products containing ammonia, bleaches, alcohol, solvents, dyes, acids (hydrochloric, formic, phosphorus, chlorine or acetic) will be detrimental to the product finish.

If using a spray cleaner, apply the cleaning agent onto a soft cloth, never directly spray onto the product as the cleaner may enter gaps and openings and cause damage. Do not allow the cleaner to remain on the product for a extended period of time.

After cleaning, rinse thoroughly with clean water, dry with a soft cloth.

## PRODUCT CLEANING

We recommend cleaning with a soft damp cloth and mild soap solution.

**DO NOT** use cream cleaners or cleaners containing bleach.

**DO NOT** scrub or scour.

**DO NOT** use abrasive cleaning agents.

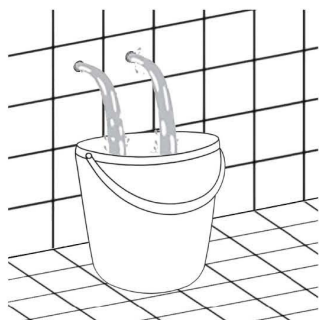
**DO NOT** use solvent based cleaners.



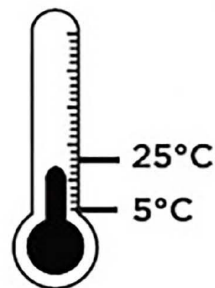
By following our recommended cleaning and maintenance guidelines, you will preserve the quality and appearance of your product, ensuring reliable performance and long-lasting enjoyment for many years.

# ATTENTION

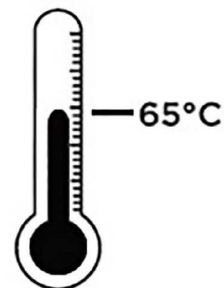
**WARNING:**  
FLUSH THE  
PIPES BEFORE  
CONNECTING



## INLET WATER TEMPERATURES

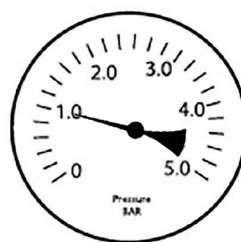


**COLD** WATER

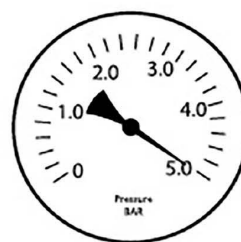


**HOT** WATER

## WATER PRESSURE

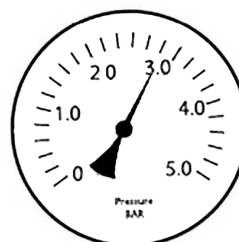


**MIN** 1.0 BAR



**MAX** 5.0 BAR

Hot and Cold pressure should be kept balanced  
within 1 BAR



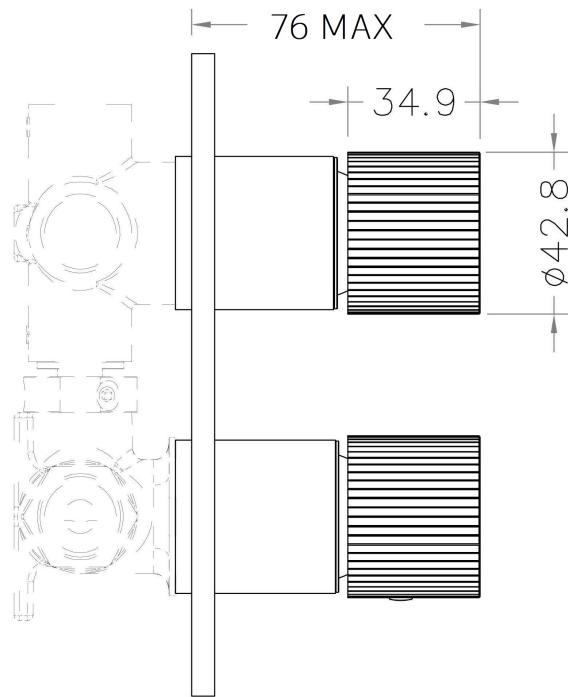
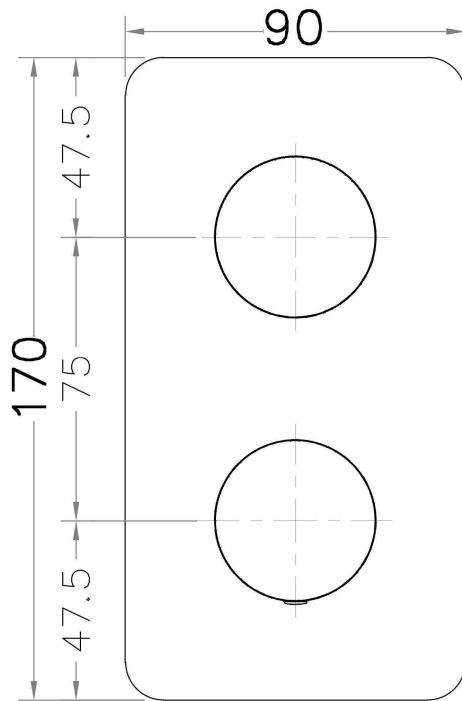
**RECOMMENDED** 3.0 BAR

## BEFORE INSTALLATION

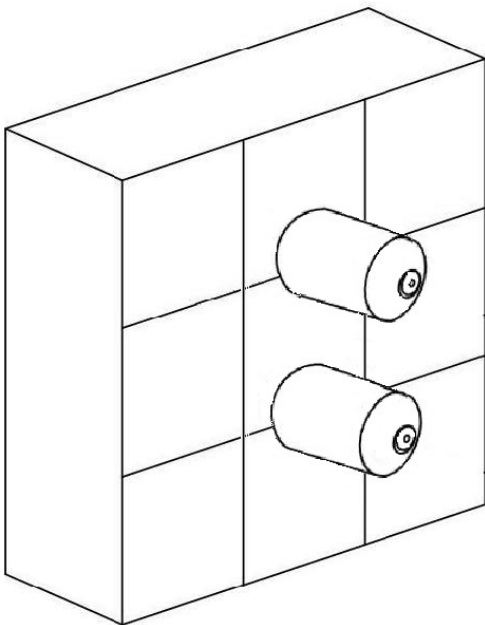
- ✓ Check concealed part installation  
guide :  
BDM-MIX-C412-T2

# INSTALLATION

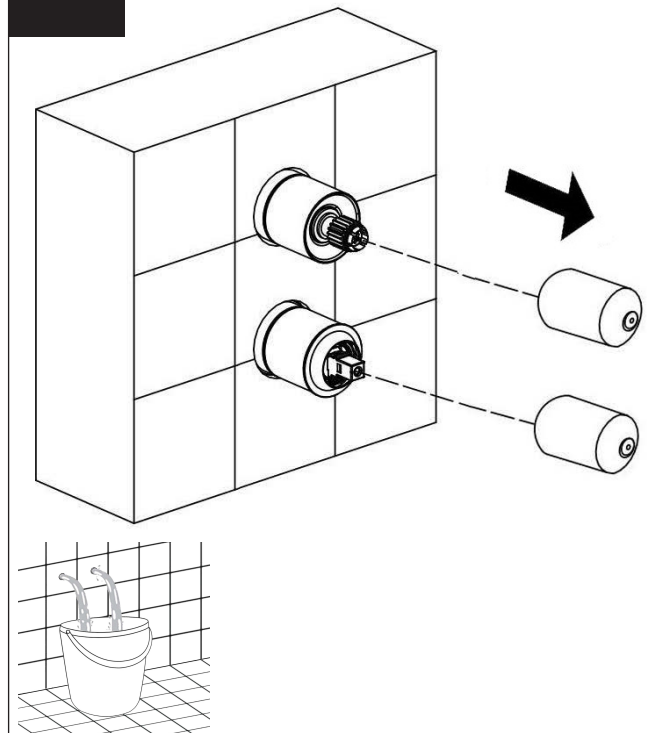
## PRODUCT DIMENSION



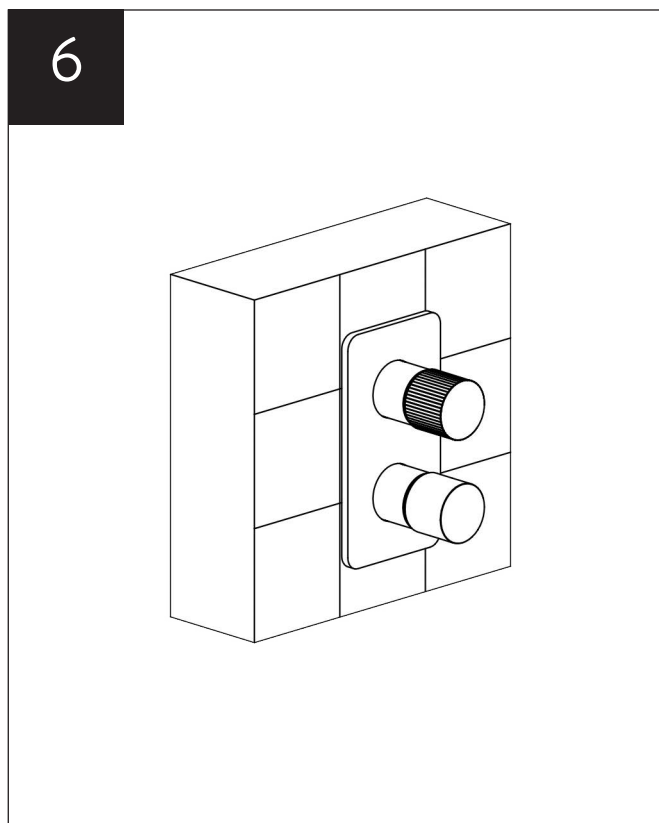
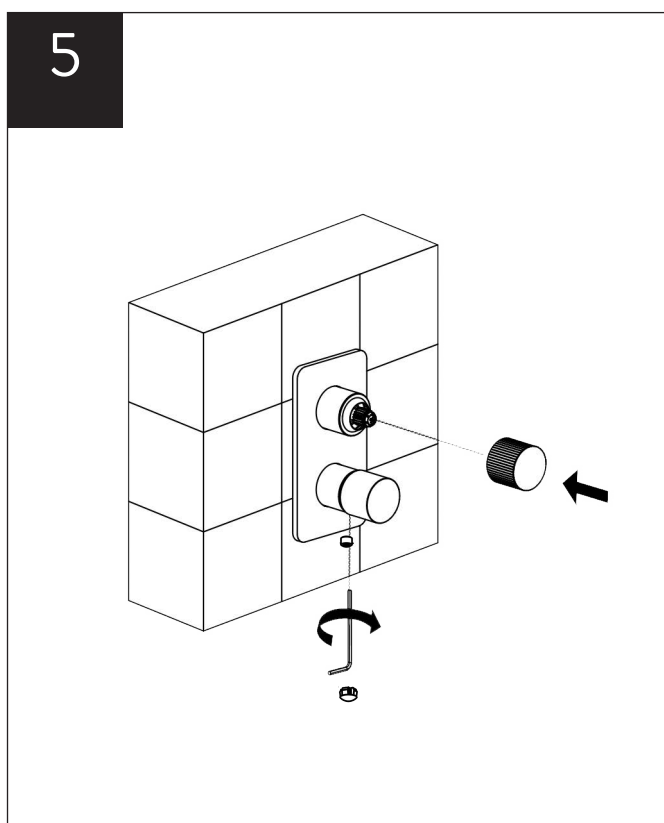
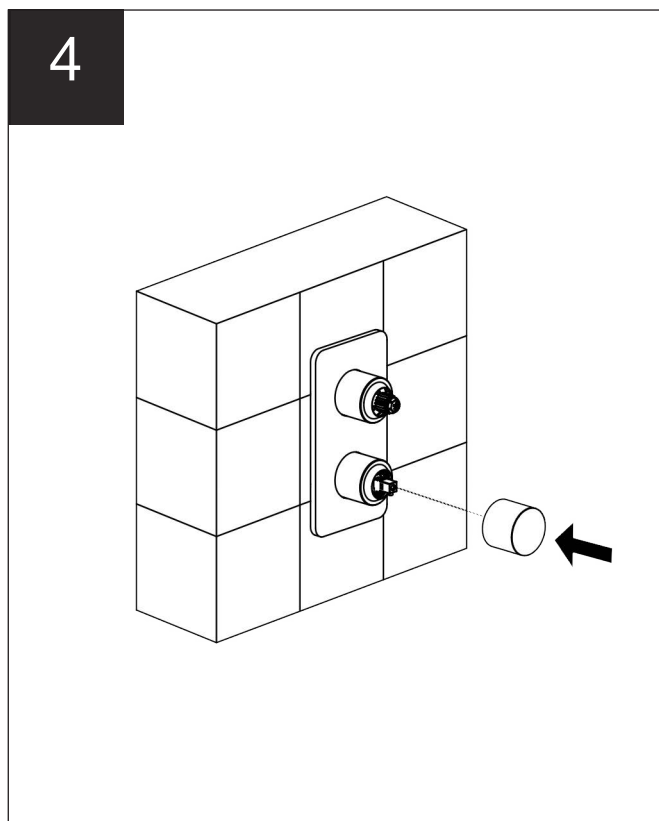
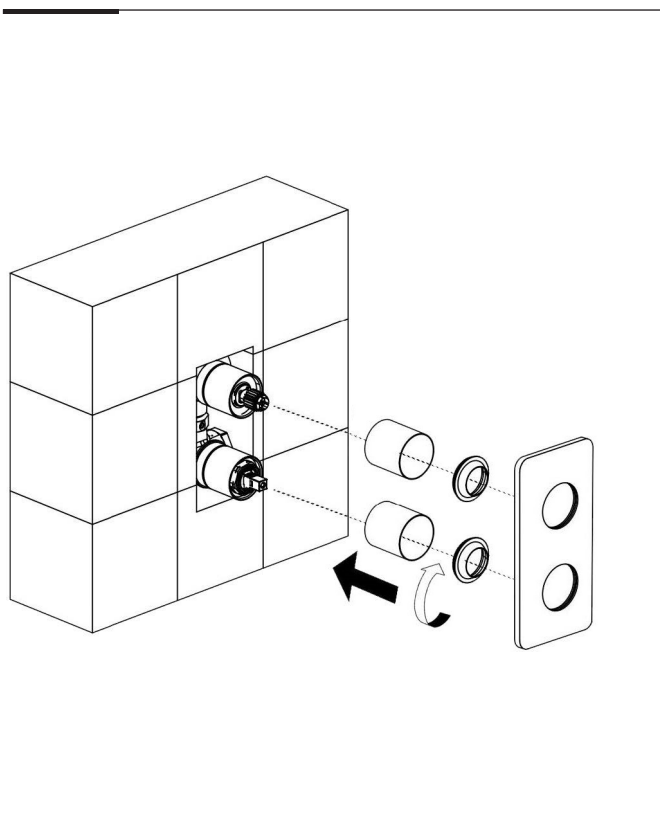
1



2



# INSTALLATION



# WARRANTY

Sanipex Group warrants that all Products will be free from manufacturing defects and design defaults on the date of purchase and for the duration mentioned in the Product Technical Specification sheet ("Warranty Period").

Liability of Sanipex Group shall be limited to either repairing or replacing the faulty Products, at its sole discretion, if the same are within the Warranty Period. If Sanipex Group has ceased manufacturing the Product and is unable to replace the Product or provide a suitable part, Sanipex Group will offer to replace the Product with a suitable alternative product that matches the Product as closely as possible.

This warranty shall not be applicable on third party products and in such cases the warranty terms of the concerned third party shall apply.

For further details and information about our Warranty conditions and where certain exclusions may apply, please visit **[www.sanipexgroup.com/c/warranty](http://www.sanipexgroup.com/c/warranty)**

## BAGNODESIGN

For more information visit **[www.bagnodesign.it](http://www.bagnodesign.it)**



## SANIPEXGROUP

