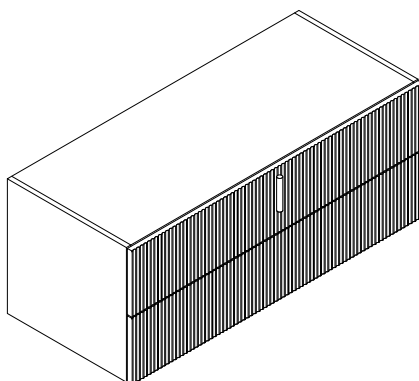
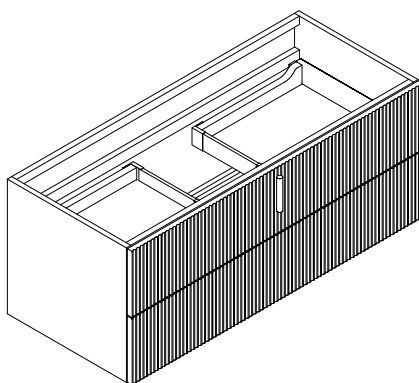
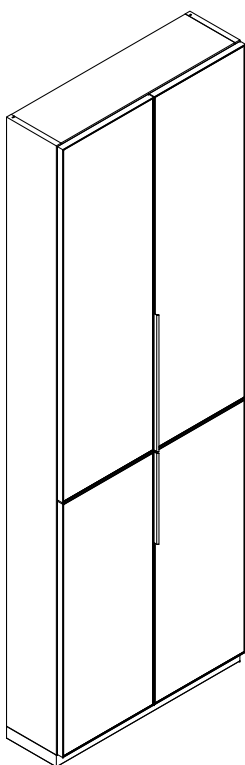


# BAGNODESIGN

EXPERTLY CRAFTED BATHROOMS

---

## Installation Guide



**BDF-ORO-FUR-GEN**

Orology Furniture

A member of **SANIPEXGROUP**  
[www.sanipexgroup.com](http://www.sanipexgroup.com)

## IMPORTANT PLEASE READ

All products manufactured and supplied by BAGNODESIGN are fit for purpose as long as they are Installed, used correctly, cleaned and receive regular maintenance in accordance with these instructions...

Remove all packaging and check the product for damage or missing parts before commencing with the installation.

Any alterations made to this product and its components may infringe product certification, infringe water regulations and invalidate the guarantee. The Installation must comply with all local/national water supply authority regulations/bylaws and building and plumbing regulations, therefore we strongly recommend that your product be installed by a reputable qualified trade's person.

## PRODUCT LIFECYCLE

*"The product LiveCycle is the collective stages that a product goes through from its conception and design through to its ultimate disposal."*

## DISPOSAL GUIDANCE

The best way to ensure your Product has a long life is to follow the Care and Maintenance guides set by the Manufacture after purchase. This document can be found at [www.sanipexgroup.com](http://www.sanipexgroup.com).

The life cycle of the product is not in correlation to the product Guarantee; the standards the products are manufactured or certified to (e.g. CE & WRAS) can exceed past the Guarantee duration. After the life cycle of the product is deemed complete by the end-user please follow the below to dispose of the items correctly...

## CLEANING CARE GUIDE

Only use a mild soap and water for cleaning.

Rinse with water to remove the mild soap solution.

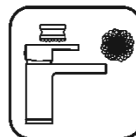
We recommend the product is dried using a soft cloth after every use.

**Never** use any abrasive or strong cleaning products containing, bleaches, acids (hydrochloric, formic, phosphorus, chlorine or acetic), strong detergents, limescale remover, alcohol or dyes etc.

**Never** use abrasive cleaning pads, wire wool or microfibre cloths.

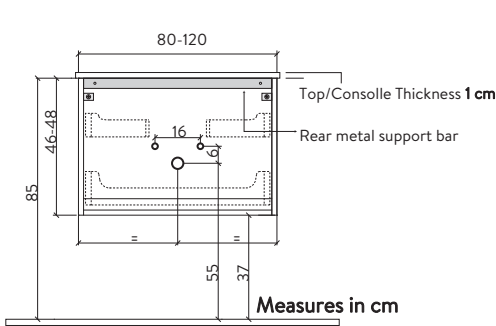
**Never** use cleaning equipment that may have been pre-used and contaminated with the above substances.

**Never** apply the cleaning product directly onto the finished surface.

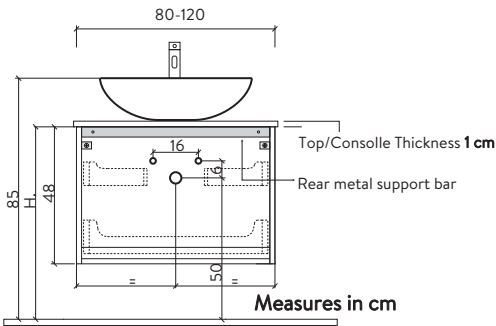


# INSTALLATION OF WALL-HUNG WASHBASIN UNITS H.48 cm

ATTENTION: Measures shown in each drawing **shall be considered indicative**, thickness of the top, consoles and heights of the washbasins, they may have influence of several centimeters upon the quotation, always consider the needs of the user in addition to any existing plants.



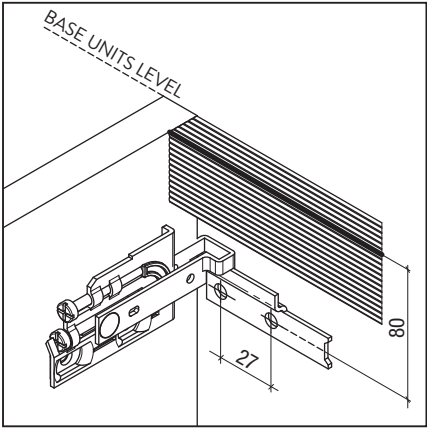
Top with integrated bowls



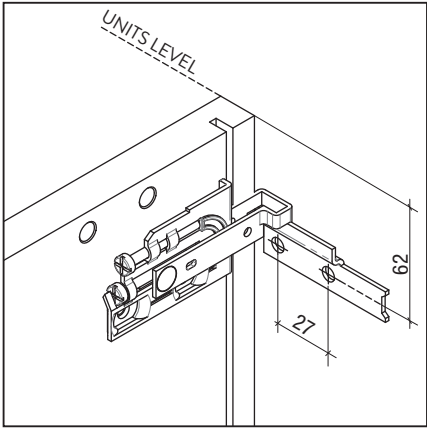
Top mounted basin

ATTENTION: While present, always fix also the wooden bar to the wall.

## Standard System Base



## Wall units, tall units and mirror cabinets



The assemblage of the furniture **SHALL be** performed by qualified personnel, at least two people, provided of suitable equipment.

At the end of the procedure, **SHALL be** released a declaration of happened installation conforming to the procedures pointed out by the manufacturer, in absence of such declaration, the guarantee of the product decays.

- **We recommend** the maximum caution in handling the furniture and its components, considering the narrow spaces that are often found in the bathroom.
- NEVER open boxes with cutter.
- **Don't drag the furniture** on the floor, but to use the cardboards of the packaging to supporting it to earth.
- **Do never use electric screwdrivers** for the final regulations of shutters or drawers, but to ONLY use hand screwdriver.

## ATTENTION

- The water lacing **SHALL be** performed by professionals or qualified technicians, with release of Certification.
- The electric lacing **SHALL be** performed by professionals or qualified technicians, with release of Certification.

## NECESSARY EQUIPMENT

- PENCIL TO MARK QUOTAS
- METER
- LEVEL
- ELECTRIC DRILL
- ELECTRIC SCREWDRIVER
- STUNG DRILL FOR WALL ( 8 AND 9 MM )
- STUNG DRILL FOR WOOD ( 3 AND 5 MM )
- CROSS SCREWDRIVER
- RUBBER HAMER
- PROPER WEDGES



**IMPORTANT NOTICE:** The wedges from 8x50 mm furnished with the furniture, are generics, for carrying walls, in presence of different walls, to use suitable wedges.



# UNPACKING

Proceed in the unpacking of the elements according to the stages as shown in pictures, taking care not to damage the cabinet.



Lay the element of the floor turned upsidedown, and carefully open the embalage.



Turn the element now leaving open the bottom in order to remove the packaging.



Put the embalage on the ground and lay the furniture on it, in order to avoid scratches.



Remove corner protections and the nylon protective bag.



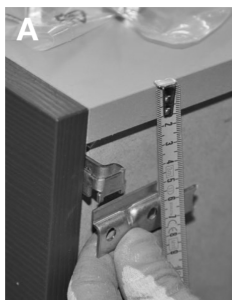
While present, remove the drawers to facilitate the operation of installation of the cabinet.

Note that for the extraction of the drawer from guides, proceed by opening the drawer 2/3 the full aperture, shutter and pull decided upward with both hands placed on the sides tray.

**WARNING:** The materials used for the packaging should be recycled or disposed of in compliance with the local regulations.

## HANG UNITS FIXING

Removed the packaging and removed the drawers from the cabinet, proceed to fixing the base to the wall following the various phases as shown in the pictures.



For the positioning of the brackets, consider that the height for a neutral unit (A) is different from a washbasin unit (B).

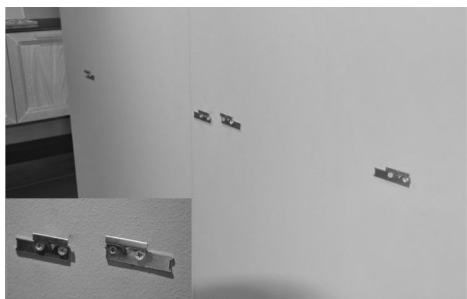
The brackets should be placed inside the side panels of the elements, detect with accuracy measures.



Detected all the necessary quotes, proceed to the mark points on the wall for drilling and insertion of the dowels (\*).



Inserted plugs in the holes, proceed to the fixing of brackets, making sure that the coupling is toward the side panel



Once fixed the brackets on the wall, and checked all measures, you can proceed with the installation of the unit to the wall.



The operation of attaching the cabinet to wall, shall be done by 2 people, in order not to cause harm to themselves and to the cabinet.

## HANG UNITS FIXING

---

Once hooked the unit, we will proceed to the leveling and the definitive fixing of the cabinet.



With the help of a collaborator control the exact coupling the furniture on the brackets, before letting go.



Checked the locked position of the furniture, put a level above it, as shown in the picture.



Now proceed to the leveling of the furniture in length, acting on the upper screw as in picture.



The leveling on the depth of the furniture is made turning the lower screw, as shown.



Once fixed the furniture with hangers, we will proceed to secure fixing with supplied screws and dowels on the posterior chain of the cabinet.



Finally, replace the drawers. This is done by extracting all of the guides, positioning the drawer above them and closing it.

## TOP - CONSOLE INSTALLATION

Fixed the furniture to the wall, we will proceed to the positioning of the chosen top or console. **IMPORTANT : we recommend the maximum care in top's handling!!!**



With the help of a collaborator placed on the floor box and open the package with care.



Always with the help of another person, extract the top-console from the packing carton, as in picture.



Lay the top on the cardboard box and remove the protective nylon bag making sure to always hold the element, so it will not fall or slip.



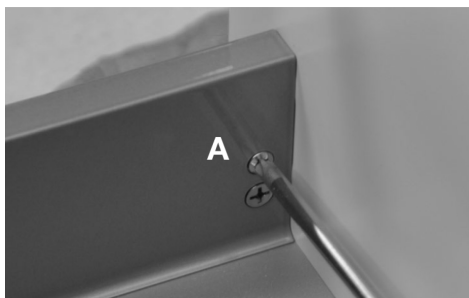
With the help of an assistant lift the top, and place it carefully above the unit.



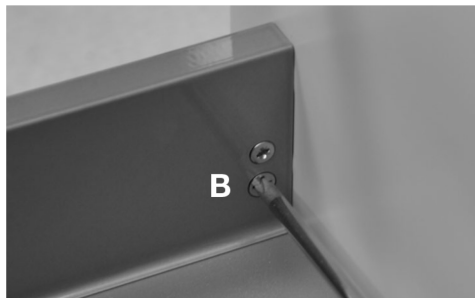
Once verified the perfect condition of the cabinet and the installation, proceed with the fixing of the top being careful to use neutral silicone.

## METAL DRAWERS REGULATIONS

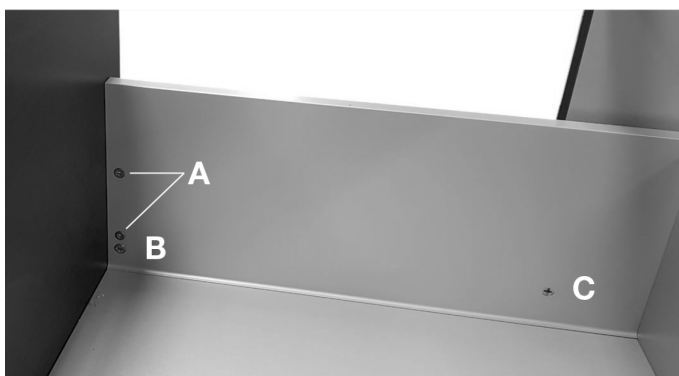
All metal drawers supplied by Puntotre have screws for better adjustment of the fronts.



Unlock the upper screw (A), before any regulation, then, lock it once finished.



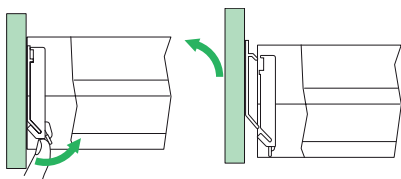
Lower screw (B) provides the vertical regulation of the front  $\pm 2$  mm.



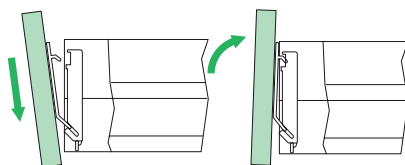
**Adjustment of front perpendicularity.**  
**ONLY on H. 36 and 48 cm fronts.**

To adjust the perpendicularity of the front panel, act on the rear screw (C).

**Following Operations are necessary ONLY in case of front's replacement**



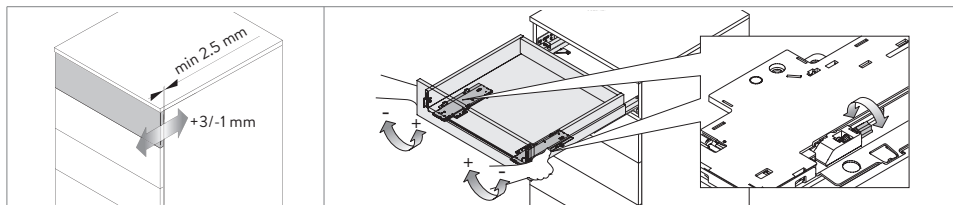
To remove the drawer, while necessary, press the front locking device away from the front and unhook the front.



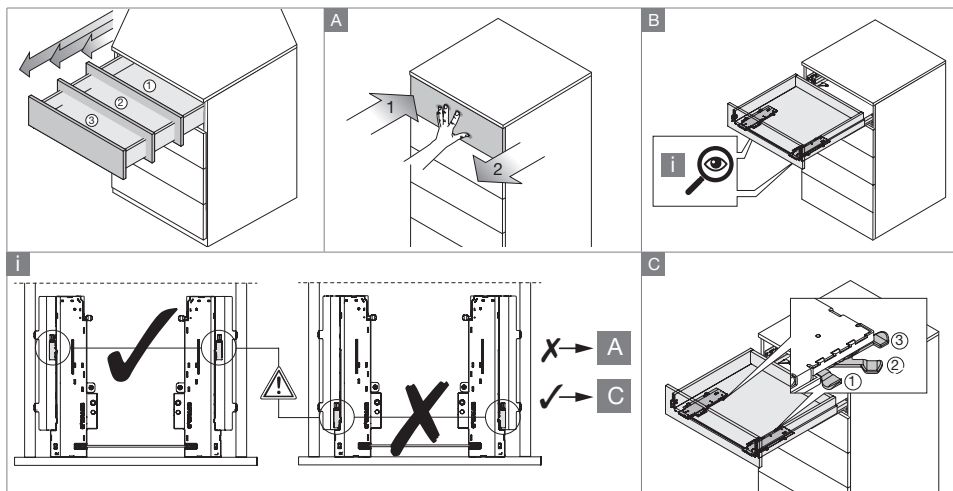
To mount the front while necessary, to introduce the front with hooks in the lower diagonal crack (positioning to zero using the locking hooks). Turn the front toward inside and press down.

# PUSH-PULL DRAWERS ADJUSTMENT

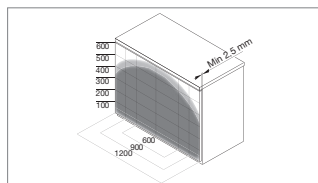
Drawer front adjustment.



Adjustment unclapsing force of the drawer.



Drawer unclapsing area.

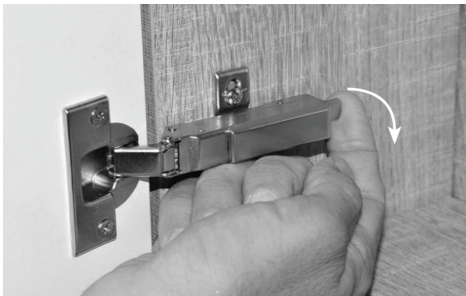


**NOTE:** Close the drawers with automatic pull-in, after a manual push.  
The return spring is projected to work with a certain inertia (drawer loaded).



# HINGES WITH RAPID LOCK-UNLOCK SYSTEM

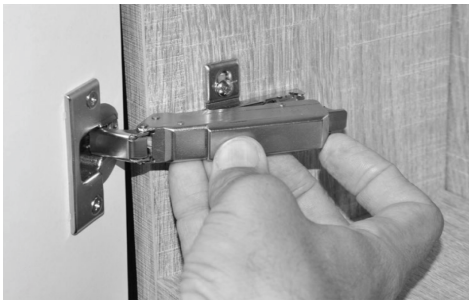
Hinges used by Puntotre are provided with rapid lock-unlock system.



To unlock hinge, pull the level toward outside.



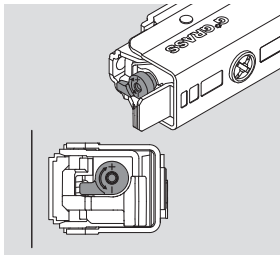
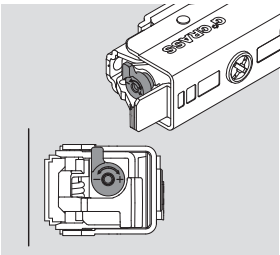
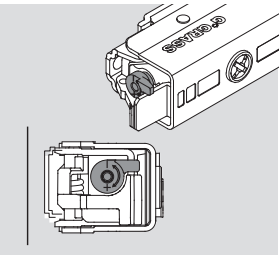
IMPORTANT: during this operation, it is important to firmly hold the door, to avoid accidental drops and damage.



To lock the hinge, first fix the external side onto proper place, hold firmly the door.



Proceed then to fix, the internal mechanism by pushing the hinge.

Absorber SLIGHT EFFORT position	Absorber MEDIUM EFFORT position	Absorber STRONG EFFORT position
		
Level oriented toward inside (small doors).	Level oriented vertical (medium doors).	Level oriented toward outside (bigger doors).

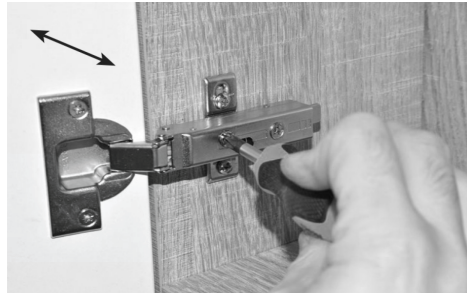
# HINGES REGULATION

---

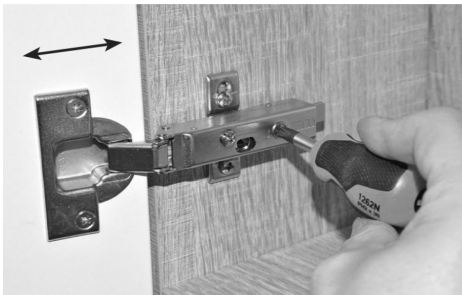
Hinges provided by Puntotre, have tri-axial regulation. Cross screwdriver tool.



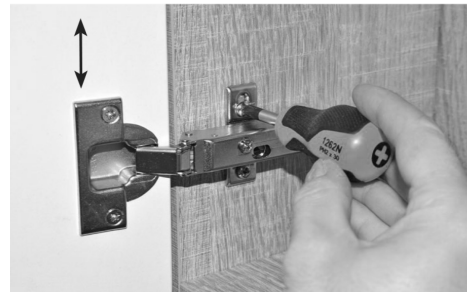
Before performing any regulation, remove the protection carter.



LATERAL: Turn indicated screw to obtain LH or RH regulation.



DEPTH : This regulation is made by the most internal screw.



VERTICAL : The provide vertical door's regulation, unlock the base of the hinge and push it on the right position, then firmly lock it again.



## HANDLE INSTALLATION

---

Puntotre provides several kind of handles and knobs.

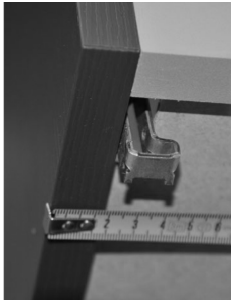


The application of the handles at the front shall always be made by screwing the screws from the inside of the drawer. In the case of knobs in fact, the most common mistake is the attempt to screw the knob directly, and not the screw. This causes scratching of the surface of the front and is NOT motive for a claim.

# COLUMNS AND HANG UNITS INSTALLATION

---

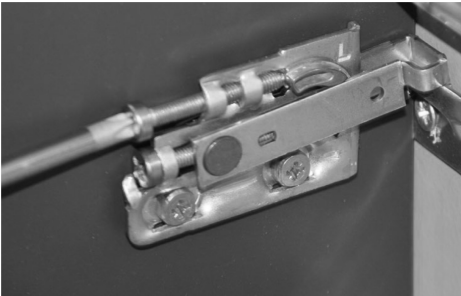
The hardware provided for this operation is the same of the 48H units.



For the positioning of the brackets to the wall, consider the position relative to the element, checking the back part.



Detected points on the wall, drill the holes, insert dowels and attach the brackets.



Now proceed to the leveling of the cabinet by turning the upper screw on the hardware, as shown.



By turning the lower screw, you may have the regulation of the cabinet closest to the wall.

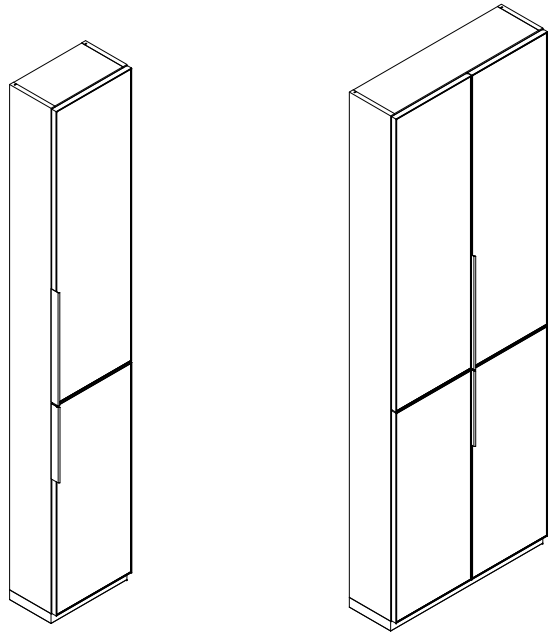
## ECOLOGY - ENVIRONMENT

The buyer has the obligation to dispose different packaging materials through the appropriate structures in the area, who will handle his recovery in accordance with the local rules.

At the end of its use, do not dispose of the furniture in the environment !

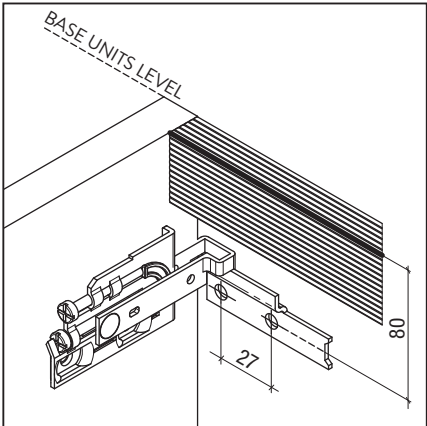
# TALL UNITS INSTALLATION

---

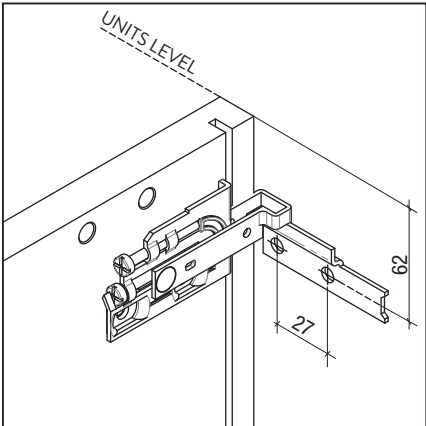


**ATTENTION:** While present, always fix also the wooden bar to the wall.

Standard System Base



Wall units, tall units and mirror cabinets



# BAGNODESIGN

EXPERTLY CRAFTED BATHROOMS

---

---

---

---

---

---

---

---

---

---

---

---

---